

TEL:0086-731-85835199

EMAIL:sales31@sanygroup.cn
WEB:WWW.SANYGLOBAL.COM
FB:www.facebook.com/sanyglobal



ADD:SANY INDUSTRIAL PARK, ECONOMIC AND TECHNOLOGICAL
DEVELOPMENT ZONE, CHANGSHA, HUNAN, CHINA

Rated Power:164KW/2200rpm
Operating Weight: 17100±200kg
Bucket Capacity: 2.7~4.0m³
Rated Load: 5000kg

**BUILT FOR MAXIMUM
PRODUCTIVITY AND RELIABILITY**

SYL956H5 Wheel Loader
Superb Performance
Std. & Opt. Equipment
Specification





SUPERB PERFORMANCE



CUMMINS QSL8.9 ENGINE

Ensures strong power, high efficiency and large displacement. Multipoint fuel injection allows for immediate throttle response, enhanced fuel efficiency and reduced noise.

Meets Tier 3 emission standard.



CUSTOMIZED DANA TRANSMISSION

The DANA axis-shift transmission with electronic control system is used for automatic shifting, maximum efficiency and 10k-hour service life.

F/R handle and fingertips control realize ease of switch between left and right hands.

Solenoid valve + logic control achieve a much smoother shifting and faster response.



LOAD-SENSITIVE HYDRAULIC SYSTEM

Perfect match between speed and power, 10%-15% energy saving.

The 25MPa high-pressure hydraulic system and main valve of large displacement achieve higher breakout and lifting force.

SUPERIOR RELIABILITY



BRAKING SYSTEM

The full hydraulic electronic control parking brake and dual circuit service brake combine maneuverability and reliability, ensuring a safe operating experience.



STRUCTURAL PARTS

Reinforced structural components are adopted for heavy-duty mining applications with a service life reaching 10k hours.

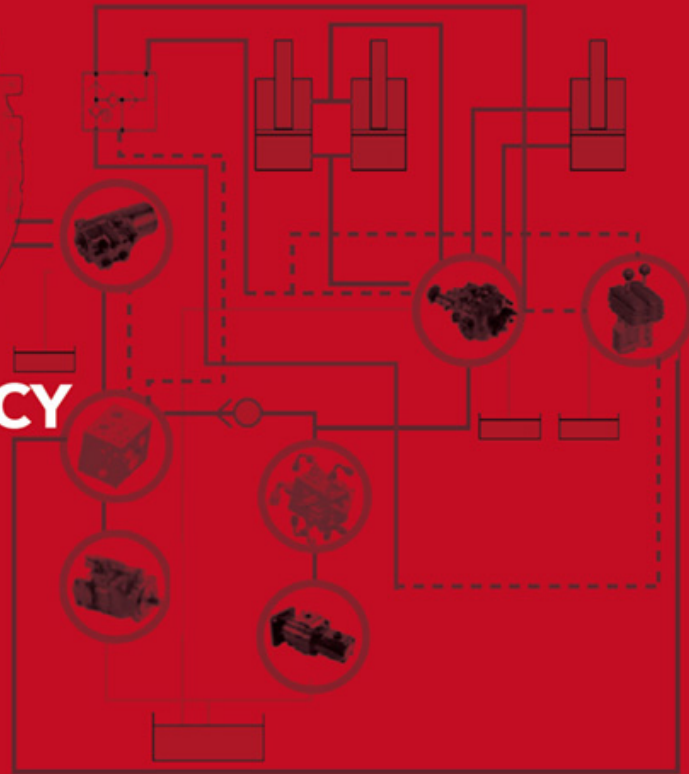





HIGH FUEL EFFICIENCY

The high-pressure load-sensitive hydraulic system and leading hydraulic components distribute the flow on demand, reducing the unnecessary energy loss and saving energy by up to 10%.

The Cummins QSL8.9 engine reduces the fuel consumption of the wheel loader.





SPACIOUS & QUIET CAB

Generous legroom and visibility, 15% larger than other Chinese wheel loaders.
Reduced noise with 78 dB(A) noise level, creating a super comfortable space for the operators.

COMFORTABLE OPERATING EXPERIENCE



ERGONOMIC DESIGN

Large and soft wrist rest with the height easy to adjust.
Enough legroom, comfortable pedal design, and the angle adjustable steering.



STD. & OPT. EQUIPMENT

STANDARD EQUIPMENT

POWER SYSTEM

Starter Motor
 Alternator
 Air Filter
 Drum-type Oil Filter
 Drum-type Fuel Filter
 Radiator with a Net
 Expansion Tank
 Wind Scooper

HYDRAULIC SYSTEM

Fingertips Pilot Control
 Control Valve with Main Relief Valve
 Backup Oil Port of Control Valve
 Inlet Filter
 Outlet Filter
 Pilot Filter

WORKING DEVICE

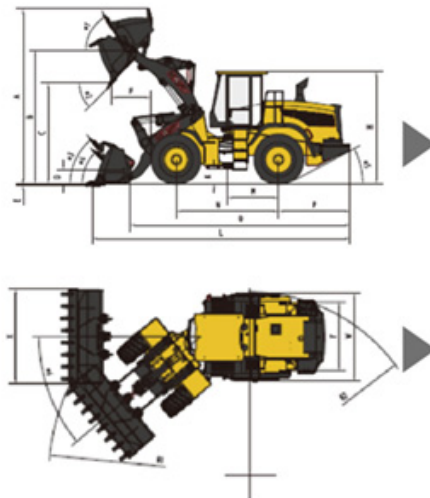
Flange Pin
 Welded Rod
 Dust Seal for All Bucket Pins
 Lubrication System
 Reinforced Boom
 Reinforced Arm
 Wear-resistant Bucket Teeth

CABIN

Soundproof Cabin of Steel Structure
 Silicone Oil Rubber Damping Bearing
 Seat with Adjustable Armrest and Inclination Angle
 Fire Extinguisher
 Cup Holder
 Air Conditioner & Heater

OPTIONAL EQUIPMEN

Extended Arm with 3.4m Dumping Height
 Ultra-long Arm with 3.6m Dumping Height
 3.5/4m³ Ultra-large Bucket
 2.7m³ Rocket Bucket
 Log Grapple
 Grass Grapple
 Side Dump Bucket



Basic	Operating Weight	kg	17100±200
	Bucket Capacity (Std.)	m ³	2.7-4.0
	Max. Torque	N·m	1000
	Rated Load	kg	5000
Engine	Model		Cummins QSL8.9-C220-III
	Rated power	kW/rpm	164/2200
	Emission Standard		Tier 3
Performance	Speed (Gear 1)	Km/h	7.1
	Max. Speed	Km/h	40
	Total Hydraulic Cycle Time	s	10.5
	Max. SAE	kN	175
	Tractive Force	kN	167
	Max. Articulation Angle	°	40
	Dumping Height at 45° Discharge	mm	3118
	Dumping Reach at 45° Discharge	mm	1140
	Tipping Load, Articulated at 40°	kg	10700
	Tipping Load, Straight	kg	12600
Service Refill Capacities	Fuel Tank	L	300
	Hyd Tank	L	220
	Drive Axle Oil (Front/Rear)	L	26.2/26.2
	Engine Coolant	L	45
Dimensions	A. Max. Lifting Height	mm	5410 ± 50
	B. Max. Height of Bucket Pivot Point	mm	4132 ± 50
	C. Dumping Height	mm	3118 ± 50
	D. Transport Height	mm	460
	E. Digging Depth	mm	30
	F. Dumping Reach	mm	1140 ± 50
	H. Machine Height	mm	3501 ± 50
	K. Ground Clearance	mm	432 ± 10
	L. Machine Length (with Bucket)	mm	8016 ± 50
	M. Articulation Center to Rear Wheel Center	mm	1600
	N. Wheelbase	mm	3200
	P. Rear Overhang	mm	2229 ± 50
	Q. Counterweight to Bucket Pivot Point	mm	6807 ± 50
	W. Machine Width	mm	2825 ± 50
X. Track Width	mm	2200	
Y. Bucket Width	mm	3000	
R1. Turning Radius (Bucket)	mm	6450 ± 50	
R2. Min. Turning Radius (Wheel)	mm	5850 ± 50	