

SANY

SY500NHP High Reach Machine

Engine
Power
Operating Weight

CUMMINS QSG12
300 KW/1800 RPM
62200 KG



SY500NHP High Reach Machine

Based on HEX SY500H, SY500NHP high reach machine is the first one developed independently to meet the "one machine, multi-purpose" with a variety of applications models .

Working device designed a common base is ready to use different functions to replace the front-end equipment, to maximize customer satisfaction.

The products given characteristics of energy-saving, high efficiency, safety, improve the SANY excavator spectrum, to fill the gaps in domestic products, and have five major advantages.

MODEL		SY500NHP
Max working height	mm	28,150
Max working reach	mm	15,300
Max work attachment weight	kg	2,400
Operating weight (no attachment)	kg	60,000



Advantages

1. A multi-purpose machine

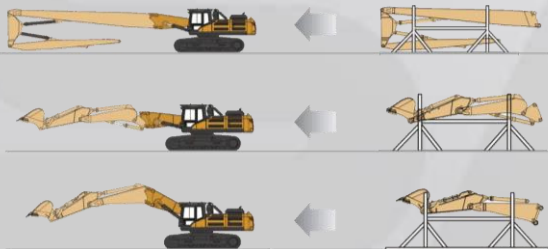
Universal base front can be equipped:

- High-reach arm
- Two-segmented arm
- Standard arm



5. Convenient transportation

The whole disassembly work device
Hydraulic quick connector



2. Energy-saving and high efficiency

- Euro IV terminal emissions
- Positive flow hydraulic control

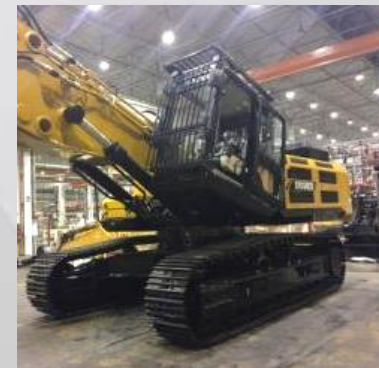


Cummins QSG12



3. Safe and reliable

- Full Guard Network Cab
- Enhanced working device
- Increase the counterweight
- A variety of electronic sensors
- Security alarm device

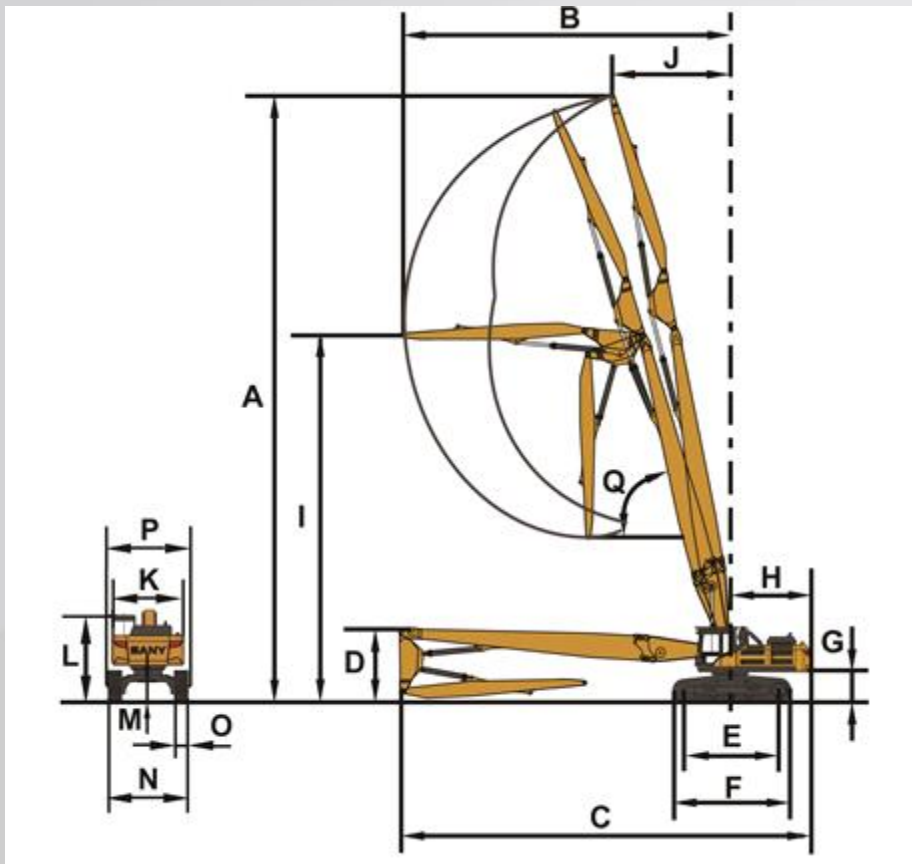


4. wide vision

- Tilted cab
- Open skylight

main parameters

- Front end working device for high altitude dismantling



Heading	Unit measure	Parameter
Operating weight	kg	62 200
Engine power	kW (h.p.)	300 (408) at 1800 rpm
Maximum torque	Nm (kgf-m)	1932 (203) at 1400 rpm
Overall width of base	mm	3 290
Overall height on a cabin	mm	3 250
Width of track shoes	Mm	700
Ground clearance	mm	550
Maximum boom reach	mm	15 288
Maximum working height	Mm	28 150