



Sany Automobile Hoisting Machinery Co., Ltd.

No.168, Jinzhou Avenue, Jinzhou Development Zone, Changsha, Hunan, China
Postcode: 410600
Service: 0086-400 6098 318 Consulting: 400 8879 318
Email: crd@sany.com.cn

— Authorised Dealer —

Reminder:
For safe and reliable operation of the diesel engines, please fill Grade IV machines with Grade IV diesel and urea solution conforming to related national standards. Please refer to the operating instructions and related standards for details.

Any change in the technical parameters and configuration due to advancement in technology may occur without prior notice. The machine in the figures may include auxiliary equipment. This brochure is for reference only, and goods in kind shall prevail.
Copyright at Sany Heavy Industry. No part of this catalogue may be copied, recorded or used for any purpose without written approval from Sany Heavy Industry.

© Printed in January 2019 in China

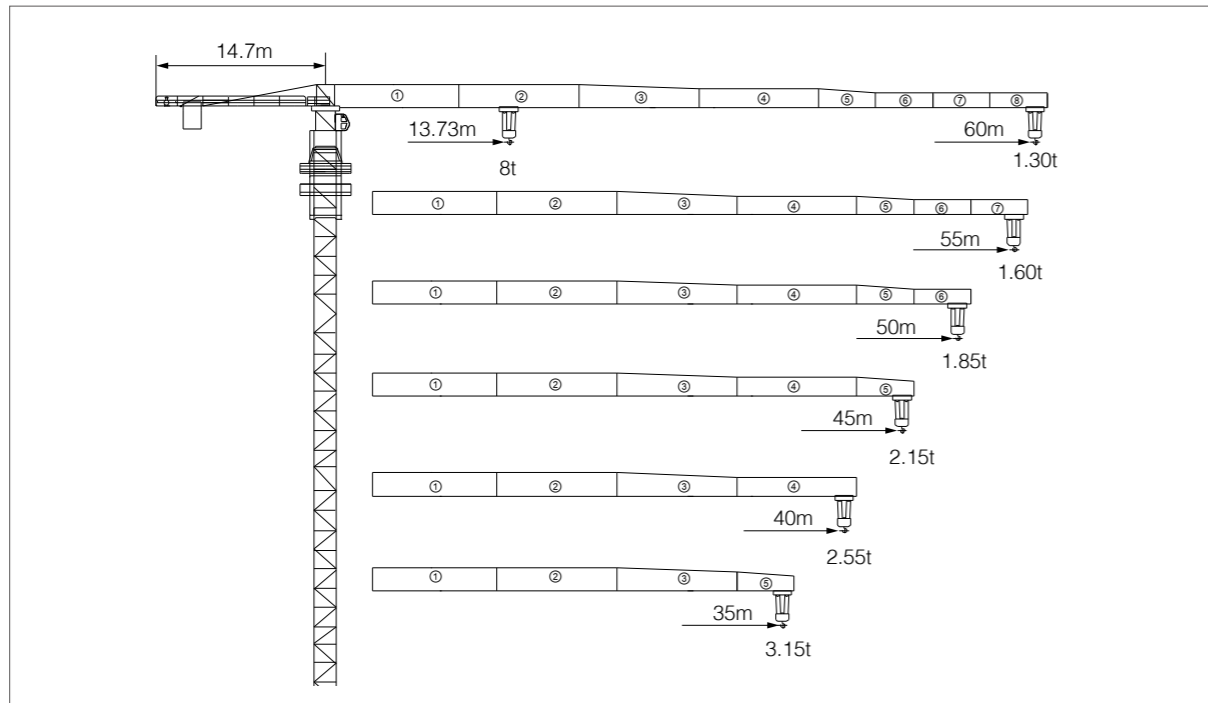
www.sanyglobal.com



SFT80(6013-8)

SANY TOWER CRANE

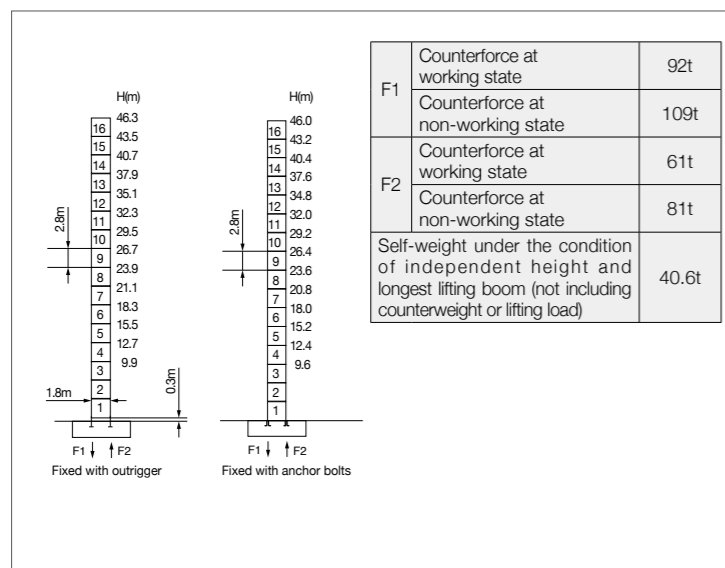
Jib Length & Tip Load



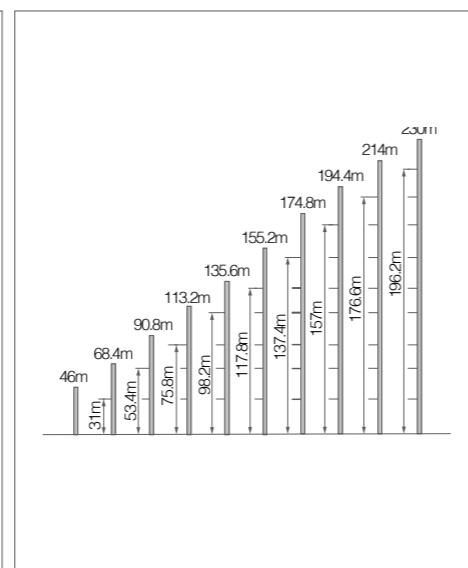
Counter-jib Ballast

Boom length (m)	Balance jib length(m)	Total weight of counterweight (kg)	2660kg counterweight (blocks)	1500kg counterweight (blocks)
60	12.9	17460	6	1
55	12.9	15960	6	0
50	12.9	14800	5	1
45	12.9	13300	5	0
40	12.9	10640	4	0
35	12.9	9480	3	1

Masts



Anchorage



Load diagrams

Range	Max. lifting capacity	18	20	25	30	32	35	38	40	
60m	⌋	(2.5-25.22)m/4t	4.00	4.00	4.00	3.25	3.00	2.69	2.42	2.27
	⌋⌋	(2.5-13.73)m/8t	5.85	5.18	3.97	3.18	2.93	2.62	2.35	2.20
55m	⌋	(2.5-26.69)m/4t	4.00	4.00	4.00	3.48	3.22	2.88	2.60	2.44
	⌋⌋	(2.5-14.51)m/8t	6.25	5.53	4.25	3.41	3.15	2.81	2.53	2.37
50m	⌋	(2.5-26.98)m/4t	4.00	4.00	4.00	3.52	3.26	2.92	2.64	2.47
	⌋⌋	(2.5-14.66)m/8t	6.32	5.60	4.31	3.45	3.19	2.85	2.57	2.40
45m	⌋	(2.5-27.20)m/4t	4.00	4.00	4.00	3.56	3.29	2.95	2.67	2.50
	⌋⌋	(2.5-14.78)m/8t	6.38	5.65	4.35	3.49	3.22	2.88	2.60	2.43
40m	⌋	(2.5-27.63)m/4t	4.00	4.00	4.00	3.63	3.36	3.01	2.72	2.55
	⌋⌋	(2.5-15.01)m/8t	6.50	5.79	4.46	3.56	3.29	2.94	2.65	2.48
35m	⌋	(2.5-28.67)m/4t	4.00	4.00	4.00	3.79	3.51	3.15	-	-
	⌋⌋	(2.5-15.56)m/8t	6.77	6.00	4.63	3.72	3.44	3.08	-	-

Range	Max. lifting capacity	42	45	48	50	52	55	58	60	
60m	⌋	(2.5-25.22)m/4t	2.13	1.94	1.78	1.69	1.60	1.48	1.37	1.30
	⌋⌋	(2.5-13.73)m/8t	2.06	1.87	1.71	1.62	1.53	1.41	1.30	1.23
55m	⌋	(2.5-26.69)m/4t	2.29	2.10	1.93	1.82	1.73	1.60	-	-
	⌋⌋	(2.5-14.51)m/8t	2.22	2.03	1.86	1.75	1.66	1.53	-	-
50m	⌋	(2.5-26.98)m/4t	2.33	2.13	1.95	1.85	-	-	-	-
	⌋⌋	(2.5-14.66)m/8t	2.26	2.06	1.88	1.78	-	-	-	-
45m	⌋	(2.5-27.20)m/4t	2.35	2.15	-	-	-	-	-	-
	⌋⌋	(2.5-14.78)m/8t	2.28	2.08	-	-	-	-	-	-

Mechanisms

Mechanism		Model	Power	Velocity	
Slewing	↻	SHJ100A	2x5.5kw	0-0.75r/min	
Trolleying	↔	SXJ33.62B	3.3/2.2kw	50/25m/min	
Lifting	↑↓	SQJ04D	37/37kw	⌋	2t 100m/min
				⌋⌋	4t 50 m/min
				⌋⌋⌋	4t 50 m/min
Power voltage	380V(±10%)	Power frequency	50HZ		