



QUALITY
CHANGES
THE
WORLD

SANY

QUALITY CHANGES THE WORLD

QUALITY CHANGES THE WORLD



**SANY TOWER CRANE
SYT80 (T6510-8)**

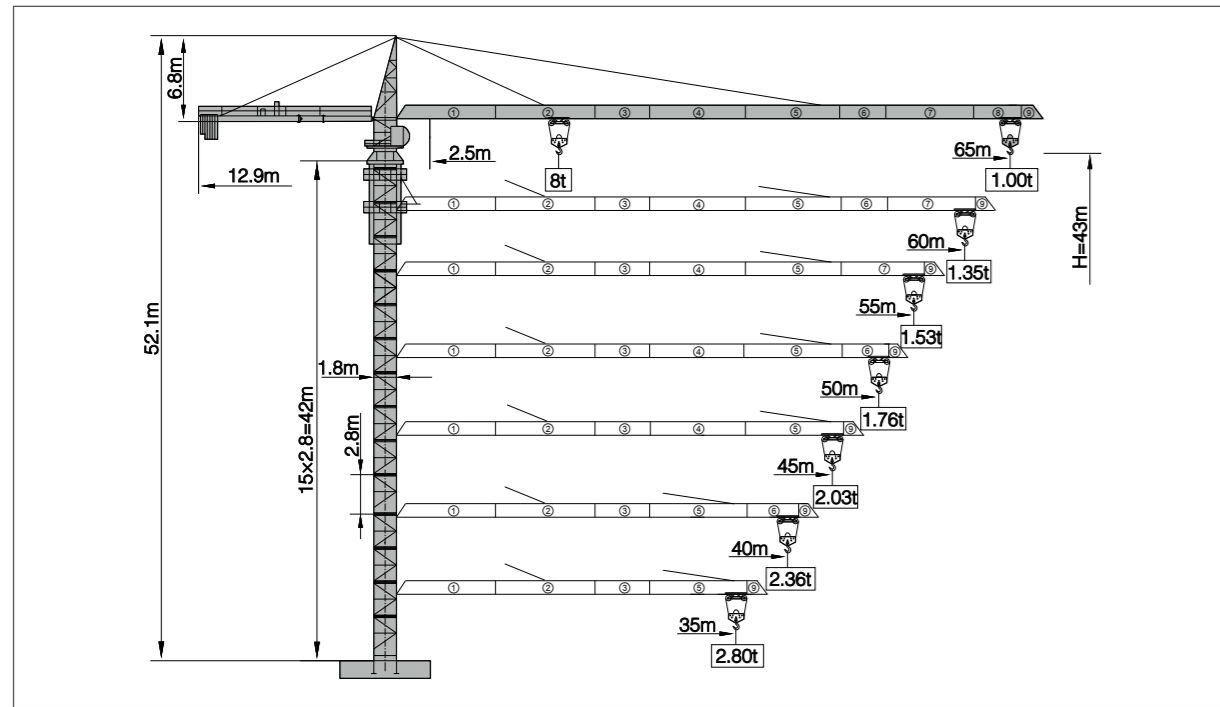
SANY HEAVY INDUSTRY CO.,LTD.

Address: SANY Industrial Park, Economic and Technological Development Zone,
Changsha, Hunan, China.
Service Hotline: +0086-4006-098-318
Email: crd@sany.com.cn
For more information, please visit: www.sanygroup.com

For our consistent improvement in technology, specifications may change without notice.
The machines illustrated may show optional equipment which can be supplied at additional cost.

Distributed By:

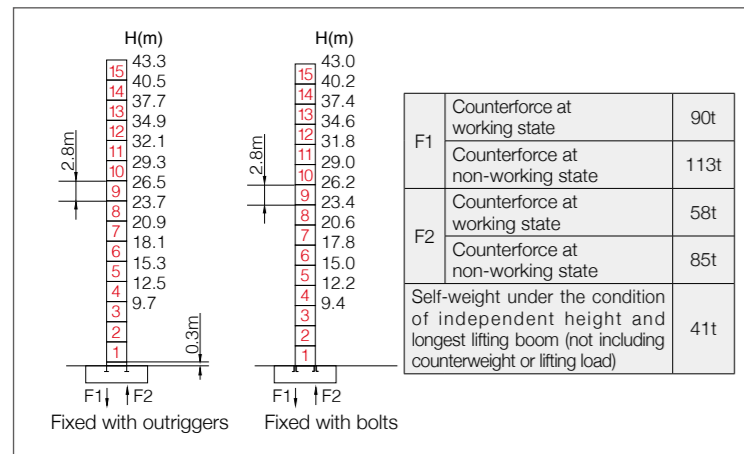
Jib Length & Tip Load



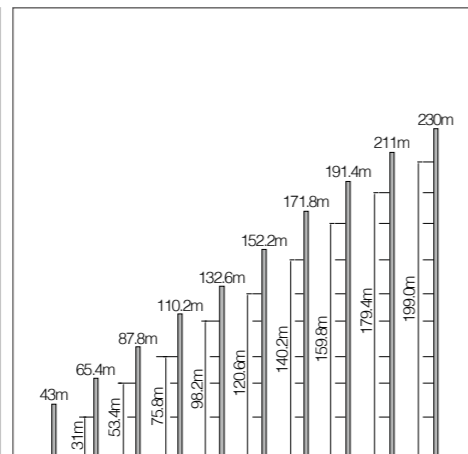
Counter-jib Ballast

Boom length (m)	Balance jib length(m)	Total weight of counterweight (kg)	2720kg counterweight (blocks)	1200kg counterweight (blocks)
65	12.9	19040	7	0
60	12.9	17520	6	1
55	12.9	16320	6	0
50	12.9	14800	5	1
45	12.9	13600	5	0
40	12.9	10880	4	0
35	12.9	9360	3	1

Masts



Anchorage

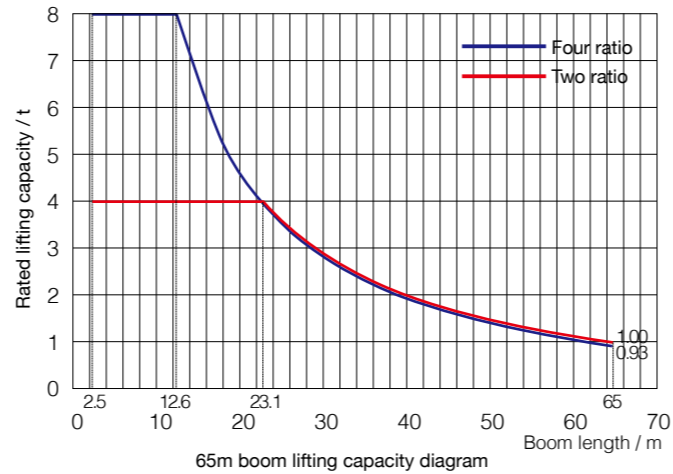


Load diagrams

Range	Max. lifting capacity	18	20	22	25	28	30	32	35	38	40
65m	2.5~23.1m/4t		4.00		3.64	3.17	2.91	2.69	2.40	2.16	2.02
	2.5~12.6m/8t	5.29	4.67	4.17	3.57	3.10	2.84	2.62	2.33	2.09	1.95
60m	2.5~25.9m/4t			4.00		3.64	3.35	3.10	2.77	2.50	2.34
	2.5~14.1m/8t	6.02	5.33	4.76	4.09	3.57	3.28	3.03	2.70	2.43	2.27
55m	2.5~25.9m/4t			4.00		3.65	3.36	3.11	2.78	2.51	2.35
	2.5~14.1m/8t	6.04	5.34	4.78	4.10	3.58	3.29	3.04	2.71	2.44	2.28
50m	2.5~26.0m/4t			4.00		3.66	3.37	3.11	2.79	2.51	2.36
	2.5~14.1m/8t	6.05	5.35	4.79	4.11	3.59	3.30	3.04	2.72	2.44	2.29
45m	2.5~26.0m/4t			4.00		3.66	3.37	3.12	2.79	2.52	2.36
	2.5~14.2m/8t	6.06	5.36	4.80	4.12	3.59	3.30	3.05	2.72	2.45	2.29
40m	2.5~26.0m/4t			4.00		3.66	3.37	3.12	2.79	2.52	2.36
	2.5~14.2m/8t	6.06	5.36	4.80	4.12	3.59	3.30	3.05	2.72	2.45	2.29
35m	2.5~26.1m/4t			4.00		3.67	3.38	3.12	2.80		
	2.5~14.2m/8t	6.08	5.38	4.81	4.13	3.60	3.31	3.05	2.73		

Range	Max. lifting capacity	42	45	48	50	52	55	58	60	63	65
65m	2.5~23.1m/4t	1.89	1.72	1.58	1.49	1.41	1.29	1.20	1.13	1.05	1.00
	2.5~12.6m/8t	1.82	1.65	1.51	1.42	1.34	1.22	1.13	1.06	0.98	0.93
60m	2.5~25.9m/4t	2.20	2.01	1.84	1.74	1.65	1.53	1.42	1.35		
	2.5~14.1m/8t	2.13	1.94	1.77	1.67	1.58	1.46	1.35	1.28		
55m	2.5~25.9m/4t	2.21	2.02	1.85	1.75	1.66	1.53				
	2.5~14.1m/8t	2.14	1.95	1.78	1.68	1.59	1.46				
50m	2.5~26.0m/4t	2.21	2.02	1.85	1.76						
	2.5~14.1m/8t	2.14	1.95	1.78	1.69						
45m	2.5~26.0m/4t	2.22	2.03								
	2.5~14.2m/8t	2.15	1.96								

Load Capacity Diagram



Mechanisms

	Model	Power	Speed
Slewing	SHJ100A	2x5.5kW	0~0.75r/min
Trolleying	SXJ33.62B	3.3/2.2kW	50/25m/min
Lifting	SQJ04D	37/37kW	2t 100m/min
			4t 50m/min
			8t 25m/min
Power voltage	380V(±10%)	Power frequency	50Hz

Note: If working rope capacity is greater than 500m, please contact the manufacturer.

Packing List

No.	Name	Shape	L(m)	B(m)	H(m)	Weight of single piece (t)	Qty.
1	Boom section I		10.19	1.45	1.36	1.40	1
2	Boom section II		10.19	1.32	1.30	0.97	1
3	Boom section III		5.19	1.32	1.30	0.43	1
4	Boom section IV		10.19	1.32	1.30	0.80	1
5	Boom section V		10.19	1.32	1.30	0.69	1
6	Boom section VI		5.19	1.32	1.30	0.38	1
7	Boom section VII		10.19	1.32	1.30	0.63	1
8	Boom section VIII		5.19	1.32	1.30	0.34	1
9	Boom section IX		0.82	1.45	1.46	0.10	1
10	Tower cap		9.53	1.42	1.90	2.76	1
11	Hook		0.92	0.22	1.09	0.24	1
12	Climbing frame		6.63	2.46	2.34	3.42	1
13	Slewing assembly		2.39	2.39	2.10	4.14	1
14	Loading dolly		1.30	1.56	0.68	0.29	1
15	Rear boom section of balance boom		6.19	1.38	0.61	0.82	1
16	Front boom section of balance boom		6.29	1.38	0.58	0.86	1
17	Full set of cab		1.85	1.20	2.20	0.40	1
18	Basic section		2.83	2.12	2.12	1.15	1
19	Standard section		2.80	1.96	1.96	0.95	14