

QUALITY CHANGES THE WORLD

**PRODUCT
SPECIFICATIONS**



STC250T4

**SANY TRUCK CRANE
25T LIFTING CAPACITY**



Max. Lifting Capacity: 25 t
Max. Boom Length: 35 m
Max. Lifting Moment: 1078 kN-m

www.sanyglobal.com

SANY TRUCK CRANE STC250T4 / 25T LIFTING CAPACITY

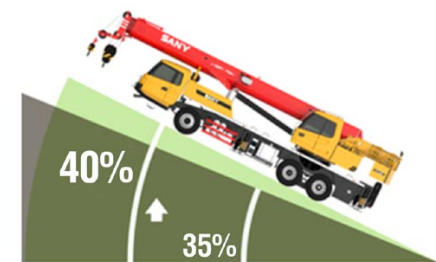
Strong boom

- 35m telescopic boom, Reach a new height of 35.5m.
- Larger cross-section boom, achieving a load moment of 1078KN·m.
- Boom section overlap increased, resulting in higher torsion resistance and bending resistance.
- 8m lattice jib, triangular structure for stable operation.



Powerful chassis

- DF Cummins ISLe290 30 engine, FAST 9-speed synchronizing gearbox, rubber suspension, 12R22.5 wire tire.
- Frame torsion resistance verified by 20k times of reliability and safety cycling test.
- Outrigger span expanded to 5.18m×6.4m (largest among this tonnage in the industry), stable base.
- Low deck carrier for drive stability.



SANY TRUCK CRANE
STC250T4 / 25T LIFTING CAPACITY

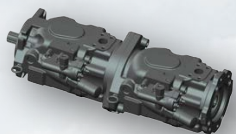


Precise hydraulics

- Load sensing hydraulic system: higher efficiency with less consumption.
- Constant-pressure powered luffing: smoothly luffing down, free from impact of load fluctuation.
- Big-flow piston slewing motor: slower slewing with larger torque.
- Power control: Engine speed reduced by 12% in operation, less fuel needed, less noise generated.



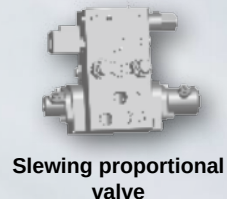
Mass-flow main valve



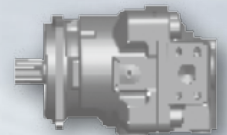
Bivariate piston pump



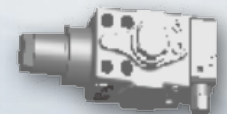
Luffing balance valve



Slewing proportional valve



Winch motor



Winch balance valve



Length & angle indicator



Smart I/O power distribution



Height limit switch



Danfoss
Pressure sensor



Winch protector



Smart control

- CAN-BUS system: instant transfer of information, as fast as 20ms.
- Fault diagnosis: BCM controller for fault detection and easy maintenance.
- 7'color display & smart panel & IO power distribution: user friendly.
- Safety guarantee: SANY, Load Moment Indicator monitoring load and wire rope conditions.

Technical Features



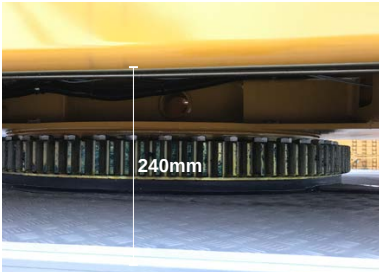
25 ton hook block



5 ton hook block

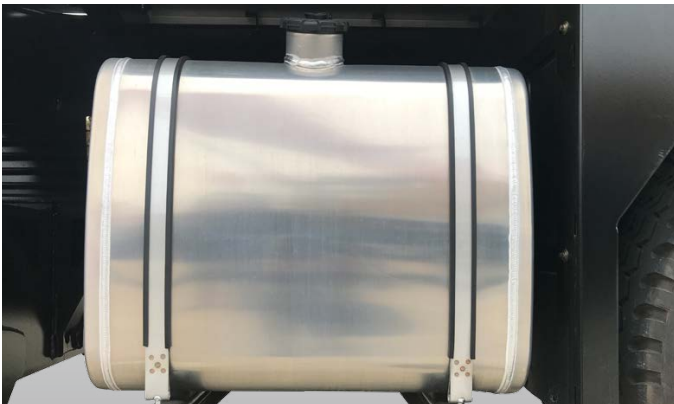
Winch for easy loading

- Max. single line pull up to 5 ton. Freight within 5t can be loaded with a 5t auxiliary hook (standard configuration).
- Auxiliary hook block: wide opening with latch, safe and convenient.



Walking deck

- Abundant distance between deck and slewing platform to place outrigger sleeper.
- Ample space on deck tail to place sleepers.



Power and travel

- 300L fuel reservoir, 882km possible after every refuel.



Heat radiator

- Oil radiator mounted on the right of slewing platform, clear airflow and radiating.

Technical Features



Two cabs

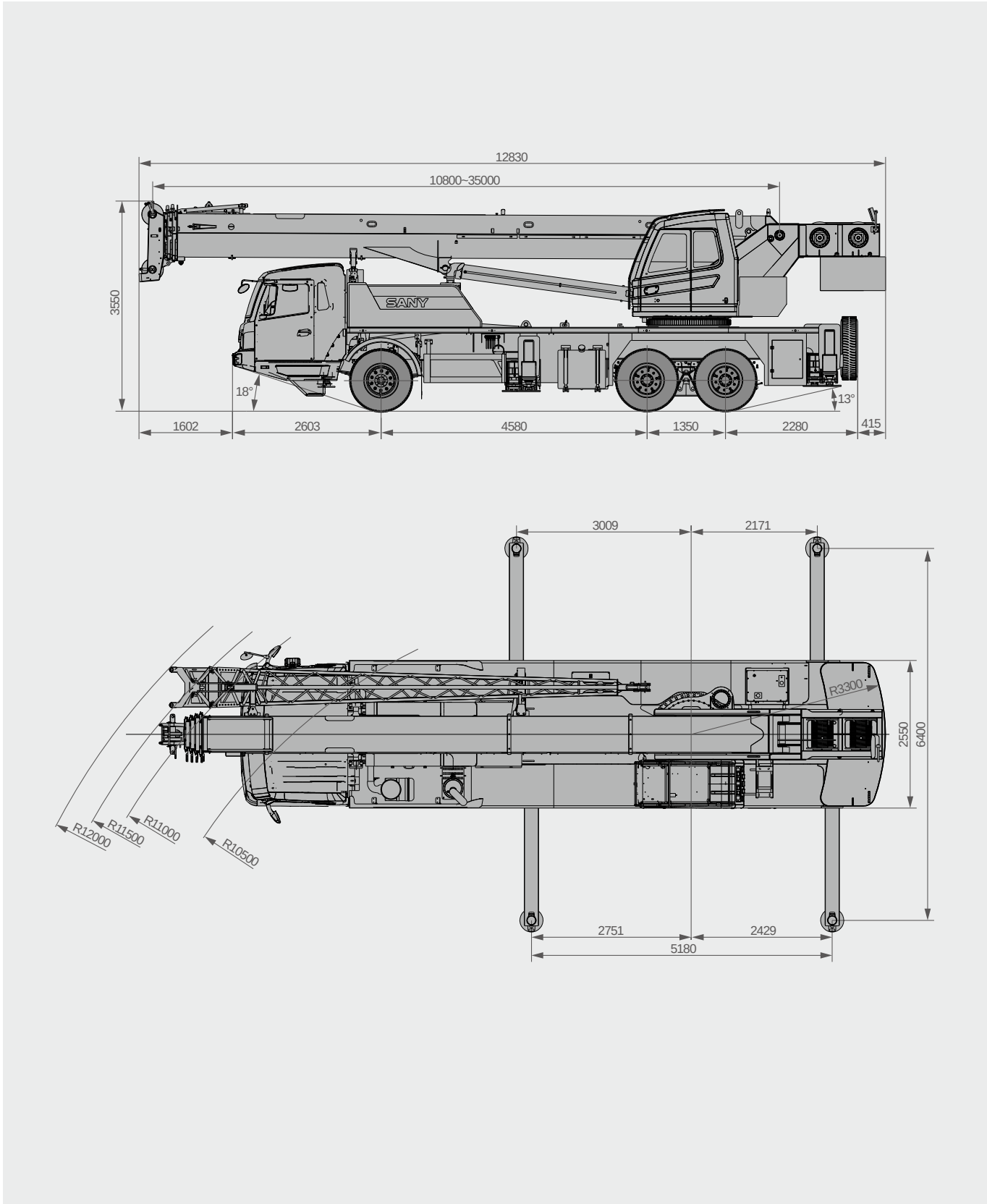
- Ergonomic design gives you comfortable drive and operation.
- Wide view and multiple indicators for safe performance.



Counterweight

- Fixed 5 ton counterweight, high density with smaller size.

Overall Dimensions



Technical Specification

CATEGORY	ITEM	UNIT	VALUE
CAPACITY	Max. lifting capacity	t	25
WEIGHT	Gross weight	kg	30600
POWER	Engine model		ISLe290 30
	Max. engine power	kW/rpm	213/2100
	Max. engine torque	N·m/rpm	1050/(1200-1400)
DIMENSIONS	Overall length	mm	12830
	Overall width	mm	2550
	Overall height	mm	3550
	Axle base	Axle 1&2 mm Axle 2&3 mm	4580 1350
TRAVEL	Max.travel speed	km/h	85
	Steering radius	Min.steering radius m Min.steering radius of boom tip m	10.5 12.5
	Min.ground clearance	mm	250
	Approach angle	°	18
	Departure angle	°	13
	Max.gradeability	%	40
	Fuel consumption per 100km	L	35
MAIN PERFORMANCE	Working temperature range	°C	-20~+45
	Min.rated lifting radius	m	3
	Tail slewing radius	m	3.3
	Boom sections (Qty.)		4
	Boom shape		U-shape
	Max.lifting moment	Basic boom kN·m Full-extend boom kN·m Full-extend boom+jib kN·m	1078 658 356
	Boom length	Basic boom m Full-extend boom m Full-extend boom+jib m	10.8 35 43
	Outrigger span (Longitudinal×Transverse)	m	6.4×5.18
	Jib offset	°	0,15,30
OPERATION SPEED	Max.single rope lifting speed of main winch (empty load)	m/min	130
	Max.single rope lifting speed of auxiliary winch (empty load)	m/min	130
	Full extension / Retraction time of boom	s	55/45
	Full luffing up / Down time of boom	s	45/55
	Slewing speed	r/min	2.5
AIRCONDITIONER	In operator's cab		Heating & Cooling
	In driver's cab		Heating & Cooling

Technical Parameters



Axle Load

Axle	1	2	3	Gross weight
Load per axle /kg	6800	12000	11800	30600



Hook

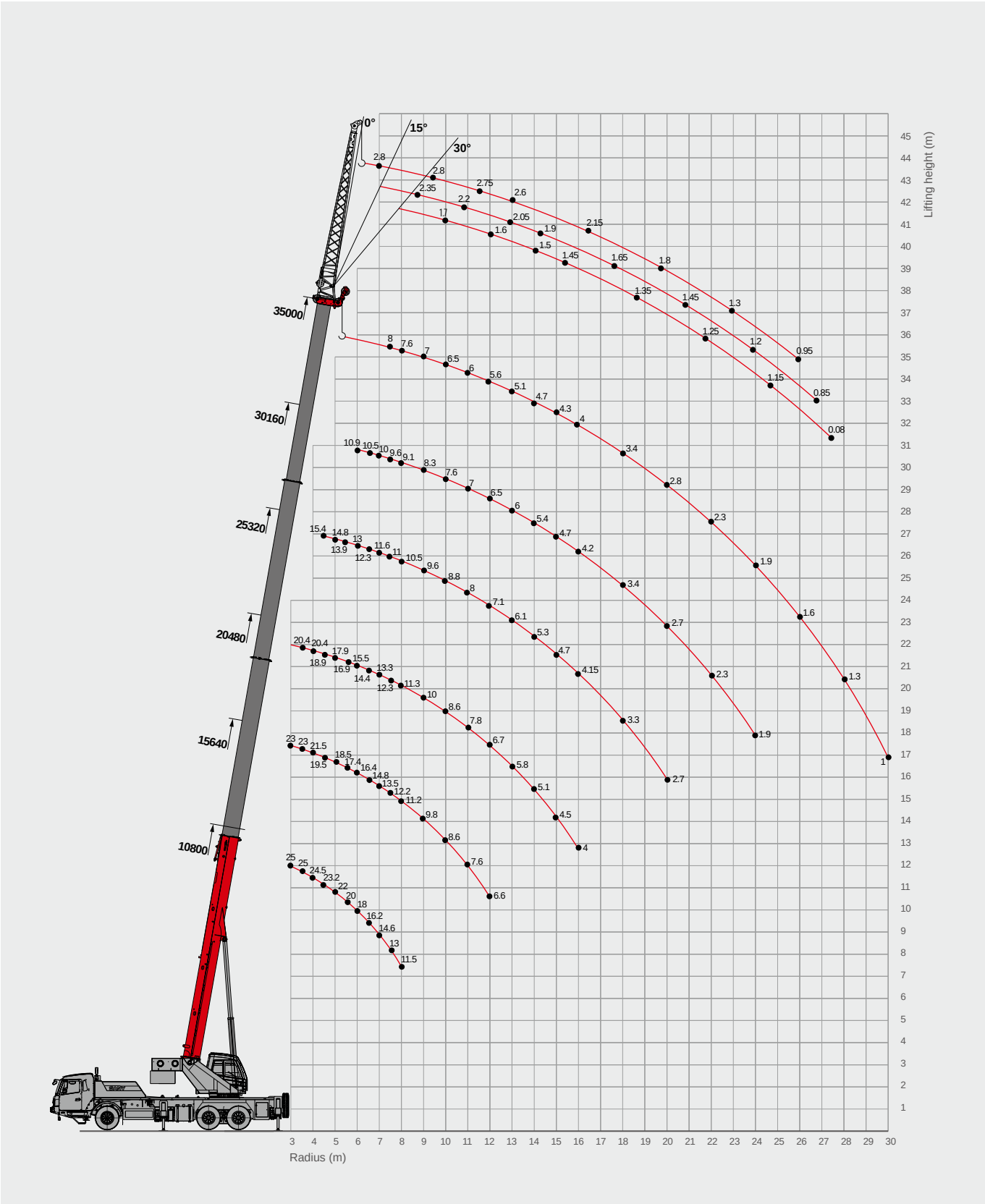
Load/t	Number of sheaves	Rope rate	Hook weight /kg
25	4	8	320
5	-	-	85



Operations

Item		Rope diameter/length	Max. single line pull
Main winch		16mm/165m	5t
Auxiliary winch		16mm/95m	5t
Slewing		2.5r/min	
Luffing up/down		45s/55s	
Telescoping		55s/45s	
Outrigger jack	Retract	30s	
	Extend	15s	
Outrigger beam	Retract	25s	
	Extend	20s	

Operating Range



Load Chart-Telescopic Boom

Unit: kg



Radius (m)	10.8	15.6	20.5	25.3	30.2	35	Radius (m)
3.0	25000	23000					3.0
3.5	25000	23000	20400				3.5
4.0	24500	21500	20400				4.0
4.5	23200	19500	18900	15400			4.5
5.0	22000	18500	17900	14800			5.0
5.5	20000	17400	16900	13900			5.5
6.0	18000	16400	15500	13000	10900		6.0
6.5	16200	14800	14400	12300	10500		6.5
7.0	14600	13500	13300	11600	10000		7.0
7.5	13000	12200	12300	11000	9600	8000	7.5
8.0	11500	11200	11300	10500	9100	7600	8.0
9.0		9800	10000	9600	8300	7000	9.0
10.0		8600	8600	8800	7600	6500	10.0
11.0		7600	7800	8000	7000	6000	11.0
12.0		6600	6700	7100	6500	5600	12.0
13.0			5800	6100	6000	5100	13.0
14.0			5100	5300	5400	4700	14.0
15.0			4500	4700	4700	4300	15.0
16.0			4000	4150	4200	4000	16.0
18.0				3300	3400	3400	18.0
20.0				2700	2700	2800	20.0
22.0					2300	2300	22.0
24.0					1900	1900	24.0
26.0						1600	26.0
28.0						1300	28.0
30.0						1000	30.0
Rope rate	8	8	7	5	4	3	Rope rate

Load Chart-Jib

Unit: kg



Boom+Jib				
Boom angle	jib offset angle(°)			Boom angle
	0°	15°	30°	
78°	2800	2350	1700	78°
75°	2800	2200	1600	75°
72°	2750	2050	1500	72°
70°	2600	1900	1450	70°
65°	2150	1650	1350	65°
60°	1800	1450	1250	60°
55°	1300	1200	1150	55°
50°	950	850	800	50°

Remark:
1.Value listed are the max. capacity when the crane is in a level condition on solid ground or surface;
2.When the fifth outrigger is landed in position, value listed are applicable for 360 degree operation. In case of damage, avoid loading above carrier cab. Front operation is forbidden when the fifth outrigger is not working;
3.Value above are calculated with hooks and lifting slings considered (320kg main hook, 85kg auxiliary hook);
4.Radius refers to horizontal reach from hook center to slewing platform center;
5.Load value is given according to the larger radius or boom length value when the actual radius or boom length falls between two numbers above;
6.Lifting performance of boom point sheave equals that of 41m boom, while max. load shall be 5t;
7.Boom load capacity shall be 450kg less than value given when jib is mounted.

Hoisting Machinery

TRUCK CRANE



SPC120T
Max.lifting capacity:12T
Full-extend boom: 31.2m
Max.lifting moment: 510kN·m



STC160
Max.lifting capacity:16T
Full-extend boom: 32m
Max.lifting moment: 730kN·m



STC200S
Max.lifting capacity:20T
Full-extend boom: 33.5m
Max.lifting moment: 880kN·m



STC250-5 (CIS)
Max.lifting capacity:25T
Full-extend boom: 40.5m
Max.lifting moment: 1029kN·m



STC250T4
Max.lifting capacity:25T
Full-extend boom: 35m
Max.lifting moment: 1078kN·m



STC250T5
Max.lifting capacity:25T
Full-extend boom: 41m
Max.lifting moment: 1063kN·m



STC300S
Max.lifting capacity:30T
Full-extend boom: 40.5m
Max.lifting moment: 1029kN·m



STC300
Max.lifting capacity:30T
Full-extend boom: 34.5m
Max.lifting moment: 1120kN·m



STC350T
Max.lifting capacity:35T
Full-extend boom: 42.5m
Max.lifting moment: 1158kN·m



STC450C5 (IN)
Max.lifting capacity:45T
Full-extend boom:43.5m
Max.lifting moment: 1666kN·m



STC500T
Max.lifting capacity:50T
Full-extend boom: 44.5m
Max.lifting moment: 2100kN·m



STC600T
Max.lifting capacity:60T
Full-extend boom: 45.5m
Max.lifting moment: 2100kN·m



STC700T
Max.lifting capacity:70T
Full-extend boom:48m
Max.lifting moment: 2107kN·m



STC800S
Max.lifting capacity:80T
Full-extend boom: 48m
Max.lifting moment: 2598kN·m



STC900T
Max.lifting capacity:90T
Full-extend boom: 50m
Max.lifting moment: 3293kN·m



STC1000S
Max.lifting capacity:100T
Full-extend boom:56m
Max.lifting moment:3234kN·m

TRUCK-MOUNTED CRANE



SPC250T3
Max.lifting capacity:25T
Full-extend boom: 25.4m
Max.lifting moment: 920kN·m



SPC250T4
Max.lifting capacity:25T
Full-extend boom: 33m
Max.lifting moment: 920kN·m



SPC320
Max.lifting capacity:32T
Full-extend boom: 32m
Max.lifting moment: 1020kN·m



SPC400E
Max.lifting capacity:40T
Full-extend boom: 35m
Max.lifting moment: 1372kN·m



SPC400
Max.lifting capacity:40T
Full-extend boom:32m
Max.lifting moment: 1400kN·m



PSLM-25 (RU)
Max.lifting capacity:25T
Full-extend boom:32m
Max.lifting moment:881kN·m

ROUGH-TERRAIN CRANE



SRC300(C)/(CR)
Max.lifting capacity:30T
Full-extend boom: 31.5m
Max.lifting moment: 976 / 965kN·m



SRC400C
Max.lifting capacity:40T
Full-extend boom: 31.5m
Max.lifting moment: 1175kN·m



SRC600C
Max.lifting capacity:60T
Full-extend boom:43.5m
Max.lifting moment:2115kN·m



SRC750
Max.lifting capacity:75T
Full-extend boom: 45m
Max.lifting moment: 2529kN·m



SRC900C
Max.lifting capacity:90T
Full-extend boom: 47m
Max.lifting moment: 2820kN·m



SRC1200
Max.lifting capacity:120T
Full-extend boom:48m
Max.lifting moment:3659kN·m

ALL-TERRAIN CRANE



SAC1100S
Max.lifting capacity:110T
Full-extend boom: 63m
Max.lifting moment: 4145kN·m



SAC1300S
Max.lifting capacity:130T
Full-extend boom: 73m
Max.lifting moment: 4547kN·m



SAC1600S
Max.lifting capacity:160T
Full-extend boom:73m
Max.lifting moment:5174kN·m



SAC1800
Max.lifting capacity:180T
Full-extend boom: 62m
Max.lifting moment: 6320kN·m



SAC2200
Max.lifting capacity:220T
Full-extend boom: 62m
Max.lifting moment: 6800kN·m



SAC2200S
Max.lifting capacity:220T
Full-extend boom: 68m
Max.lifting moment: 6800kN·m



SAC2500S
Max.lifting capacity:250T
Full-extend boom: 73m
Max.lifting moment: 7271kN·m



SAC3000S
Max.lifting capacity:300T
Full-extend boom: 81m
Max.lifting moment: 9900kN·m



SAC3500S
Max.lifting capacity:350T
Full-extend boom: 70m
Max.lifting moment: 11520kN·m




SAC4500S
Max.lifting capacity:450T
Full-extend boom: 84m
Max.lifting moment: 14570kN·m




SAC6000
Max.lifting capacity:600T
Full-extend boom: 90m
Max.lifting moment: 18228kN·m

Hoisting Machinery


HOISTING
MACHINERY
CRAWLER CRANE




SCC450A
Max.lifting capacity:45T
Max.Length of Boom:42m
Max.Length of Fixed jib: 15.25m
Max.lifting moment: 1502 m




SCC550A
Max.lifting capacity:55T
Max.Length of Boom: 52m
Max.Length of Fixed jib: 15.25m
Max.lifting moment: 2033.5m




SCC600A
Max.lifting capacity:60T
Max.Length of Boom: 52m
Max.Length of Fixed jib: 15.25m
Max.lifting moment: 2202 m




SCC750A
Max.lifting capacity:75T
Max.Length of Boom:52m
Max.Length of Fixed jib: 18m
Max.lifting moment: 2882 m




SCC4000A
Max.lifting capacity:400T
Max.Length of Boom:64m
Max.Length of Fixed jib: 12m
Max.Length of Luffing jib:84m
Max.lifting moment: 5500m




SCC5000A
Max.lifting capacity:500T
Max.Length of Boom:64m
Max.Length of Fixed jib: 12m
Max.Length of Luffing jib:84m
Max.lifting moment: 6160m




SCC6500A
Max.lifting capacity:650T
Max.Length of Boom:108m
Max.Length of Fixed jib: 15m
Max.Length of Luffing jib:96m
Max.lifting moment: 86002 m




SCC8000A
Max.lifting capacity:800T
Max.Length of Boom:96m
Max.Length of Fixed jib: 15m
Max.Length of Luffing jib:96m
Max.lifting moment: 12016m




SCC250TB
Max.lifting capacity:25T
Max.Length of Boom:42.5m
Max.Length of Fixed jib:8m
Max.lifting moment: 117.5 m




SCC800A
Max.lifting capacity:80T
Max.Length of Boom: 57m
Max.Length of Fixed jib: 18m
Max.lifting moment: 3502 m




SCC850A
Max.lifting capacity:85T
Max.Length of Boom: 57m
Max.Length of Fixed jib: 18m
Max.lifting moment: 3502 m




SCC900A
Max.lifting capacity:90T
Max.Length of Boom: 51m
Max.Length of Fixed jib: 18m
Max.lifting moment: 3602 m




SCC1000A
Max.lifting capacity:100T
Max.Length of Boom: 64m
Max.Length of Fixed jib: 18m
Max.lifting moment: 3882 m




SCC350TB
Max.lifting capacity:35T
Max.Length of Boom:31.5m
Max.Length of Fixed jib: 13.7m
Max.lifting moment: 1175 m




SCC400TB
Max.lifting capacity:40T
Max.Length of Boom:43m
Max.Length of Fixed jib: 16m
Max.lifting moment: 1502 m




SCC550TB-1
Max.lifting capacity:55T
Max.Length of Boom:42m
Max.Length of Fixed jib: 13m
Max.lifting moment: 2162 m




SCC800TB
Max.lifting capacity:80T
Max.Length of Boom:47m
Max.Length of Fixed jib: 17.5m
Max.lifting moment: 3002 m




SCC800HD
Max.lifting capacity:80T
Max.Length of Boom:55m
Max.Length of Luffing jib: 8m
Max.lifting moment: 3502 m




SCC1350A
Max.lifting capacity:130T
Max.Length of Boom: 76m
Max.Length of Fixed jib: 31m
Max.lifting moment: 6682 m




SCC1350A-1
Max.lifting capacity:130T
Max.Length of Boom: 76m
Max.Length of Fixed jib: 31m
Max.lifting moment: 6682 m




SCI1500A
Max.lifting capacity:150T
Max.Length of Boom: 76m
Max.Length of Fixed jib: 31m
Max.lifting moment: 7302 m




SCC1500A-1
Max.lifting capacity:150T
Max.Length of Boom: 76m
Max.Length of Fixed jib: 31m
Max.lifting moment: 8402 m




SCC1500D
Max.lifting capacity:150T
Max.Length of Boom: 76m
Max.Length of Fixed jib: 31m
Max.lifting moment: 9002 m




SCE600A
Max.lifting capacity:60T
Max.Length of Boom:31.5m
Max.Length of Fixed jib: 15.25m
Max.lifting moment: 2202 m




SCA1000A/ SCE1000A
Max.lifting capacity:100T
Max.Length of Boom:64m
Max.Length of Fixed jib: 22.5m
Max.lifting moment: 3802 m




SCE1350A
Max.lifting capacity:130T
Max.Length of Boom:76m
Max.Length of Fixed jib: 31m
Max.lifting moment: 6682 m




SCA2600A
Max.lifting capacity:260T
Max.Length of Boom:92m
Max.Length of Fixed jib: 42m
Max.Length of Luffing jib: 63m
Max.lifting moment: 14702 m




SCE800TB
Max.lifting capacity:80T
Max.Length of Boom:47m
Max.Length of Fixed jib: 17.5m
Max.lifting moment: 3002 m




SCC1800
Max.lifting capacity:180T
Max.Length of Boom: 86m
Max.Length of Fixed jib: 31m
Max.lifting moment: 10582 m




SCC2000A
Max.lifting capacity:200T
Max.Length of Boom: 86m
Max.Length of Fixed jib: 31m
Max.lifting moment: 11522 m



SCC2600A
Max.lifting capacity:260T
Max.Length of Boom: 86m
Max.Length of Fixed jib: 43m
Max.Length of Luffing jib:63m
Max.lifting moment: 14702 m




SCC2800A
Max.lifting capacity:280T
Max.Length of Boom: 86m
Max.Length of Fixed jib: 43m
Max.Length of Luffing jib:63m
Max.lifting moment: 16202 m




SCC3500A
Max.lifting capacity:350T
Max.Length of Boom:86m
Max.Length of Fixed jib:43m
Max.Length of Luffing jib:64m
Max.lifting moment: 48882 m


TOWER CRANE




SYT63(T5013-5)
Height: 40.5m
Boom Length: 50m
Tip load: 1.3T
Max load: 5T




SYT80(T5710-6)
Height: 40.5m
Boom Length: 57m
Tip load: 1T
Max load: 6T




SYT80(T6012-6)
Height: 40.5m
Boom Length: 60m
Tip load: 1.2T
Max load: 6T




SYT80(T6510-6)
Height: 43m
Boom Length: 65m
Tip load: 1T
Max load: 6T




SYT80(T6510-8)
Height: 43m
Boom Length: 65m
Tip load: 1T
Max load: 8T




SYT80(T6013-6)
Height: 44.8m
Boom Length: 60m
Tip load: 1.3T
Max load: 6T




SYT100(T6510-8)
Height: 44.8m
Boom Length: 65m
Tip load: 1T
Max load: 8T




SYT100(T6515-6)
Height: 46m
Boom Length: 65m
Tip load: 1.5T
Max load: 6T




SYT125(T6510-8)
Height: 44.8m
Boom Length: 65m
Tip load: 1T
Max load: 8T




SYT125(T6515-8)
Height: 46m
Boom Length: 65m
Tip load: 1.5T
Max load: 8T




SYT125E2(T6515-8)
Height: 60m
Boom Length: 65m
Tip load: 1.5T
Max load: 8T




SYT160(T7015-10)
Height: 60m
Boom Length: 70m
Tip load: 1.5T
Max load: 10T




SYT250(T7525-16)
Height: 51m
Boom Length: 75m
Tip load: 2.5T
Max load: 16T




SYT250(T7527-12)
Height: 51m
Boom Length: 75m
Tip load: 2.7T
Max load: 12T




SYT315(T7530-16)
Height: 60m
Boom Length: 75m
Tip load: 3T
Max load: 16T




SFT100(T6013-8)
Height: 45m
Boom Length: 60m
Tip load: 1.3T
Max load: 8T




SFT160(T7015-10)
Height: 60m
Boom Length: 70m
Tip load: 1.5T
Max load: 10T




SFT258(T7021-12)
Height: 60m
Boom Length: 70m
Tip load: 2.1T
Max load: 12T



SFT321(T7526-16)
Height: 60m
Boom Length: 75m
Tip load: 2.6T
Max load: 16T



SLT160(T5523-12)
Height: 45m
Boom Length: 55m
Tip load: 2.3T
Max load: 12T



SLT260(T5531-18)
Height: 52m
Boom Length: 55m
Tip load: 3.1T
Max load: 18T



Sany Automobile Hoisting Machinery Co., Ltd.

No.168, Jinzhou Avenue, Jinzhou Development Zone, Changsha, Hunan, China

Postcode: 410600

Service: 0086-400 6098 318 Hotline: 400 8879 318

Email: crd@sany.com.cn

Reminder:

For safe and reliable operation of the diesel engines, please fill Grade IV machines with Grade IV diesel and urea solution conforming to related national standards. Please refer to the operating instructions and related standards for details.

Any change in the technical parameters and configuration due to advancement in technology may occur without prior notice. The machine in the figures may include auxiliary equipment. This brochure is for reference only, and goods in kind shall prevail. Copyright at Sany Heavy Industry. No part of this catalogue may be copied, recorded or used for any purpose without written approval from Sany Heavy Industry.

© Printed in April 2020 in China

