

# QUALITY CHANGES THE WORLD



QUALITY CHANGES THE WORLD

**SANY**



QUALITY CHANGES THE WORLD



## **SANY HEAVY INDUSTRY CO.,LTD.**

Address: SANY Industrial Park, Economic and Technological Development Zone,  
Changsha, Hunan, China.  
Service Hotline: +0086-4006-098-318  
Email: [crd@sany.com.cn](mailto:crd@sany.com.cn)  
For more information, please visit: [www.sanygroup.com](http://www.sanygroup.com)

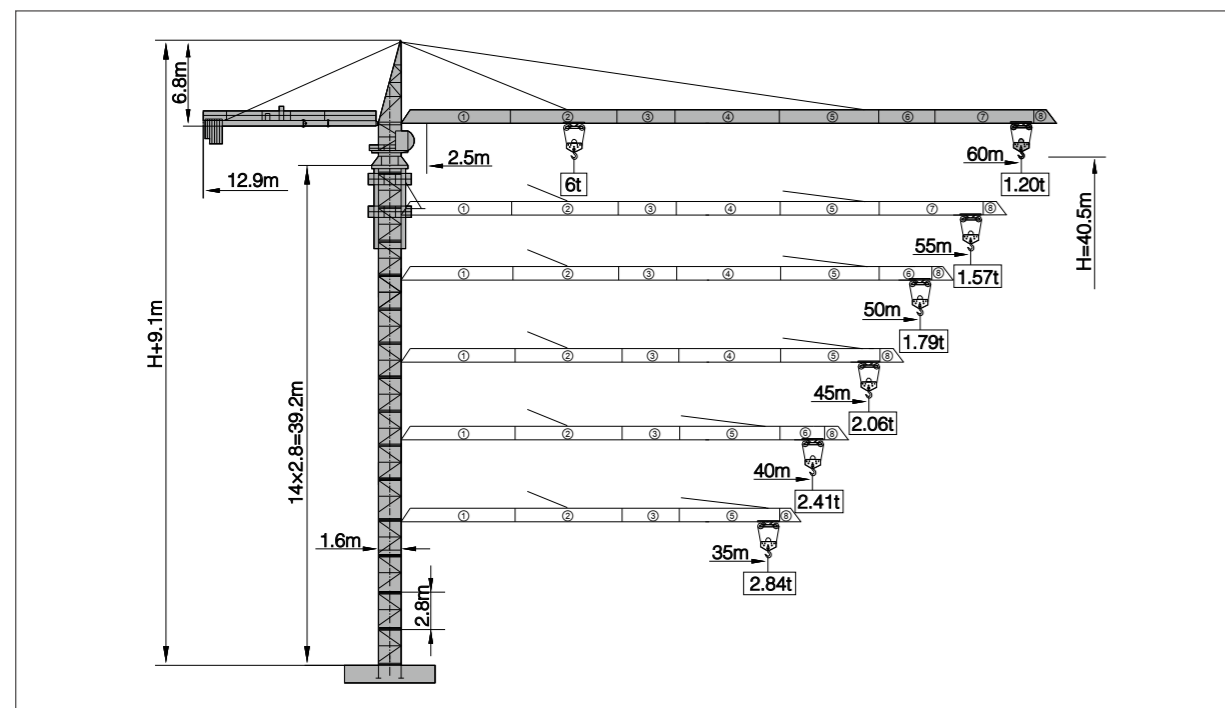
For our consistent improvement in technology, specifications may change without notice.  
The machines illustrated may show optional equipment which can be supplied at additional cost.

Distributed By:

## **SANY TOWER CRANE SYT80 (T6012-6)**

[www.sany.com.cn](http://www.sany.com.cn)

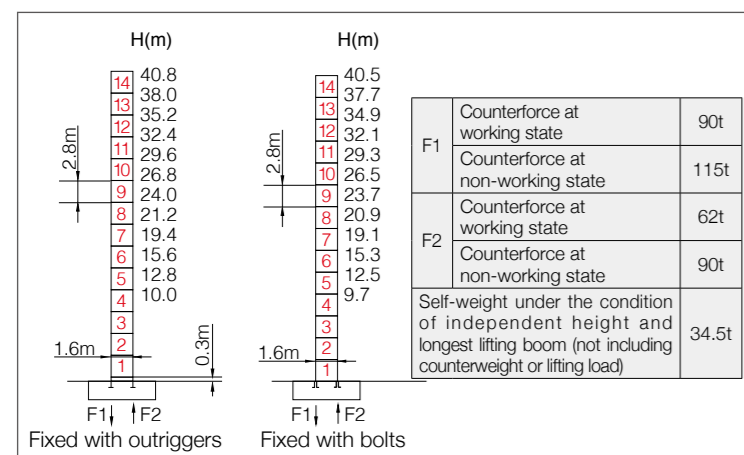
Jib Length & Tip Load



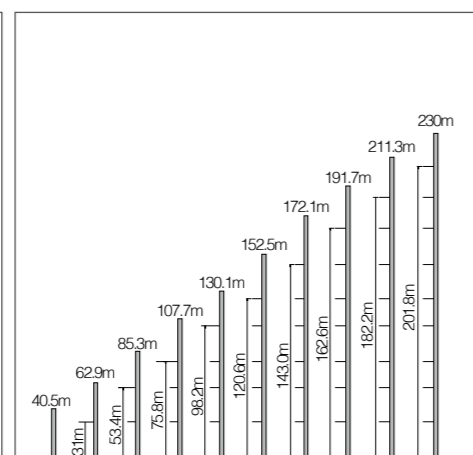
Counter-jib Ballast

Boom length (m)	Balance jib length(m)	Total weight of counterweight (kg)	2660kg counterweight (blocks)	1500kg counterweight (blocks)
60	12.9	16300	5	2
55	12.9	14800	5	1
50	12.9	13300	5	0
45	12.9	12140	4	1
40	12.9	9480	3	1
35	12.9	7980	3	0

Masts



Anchorage

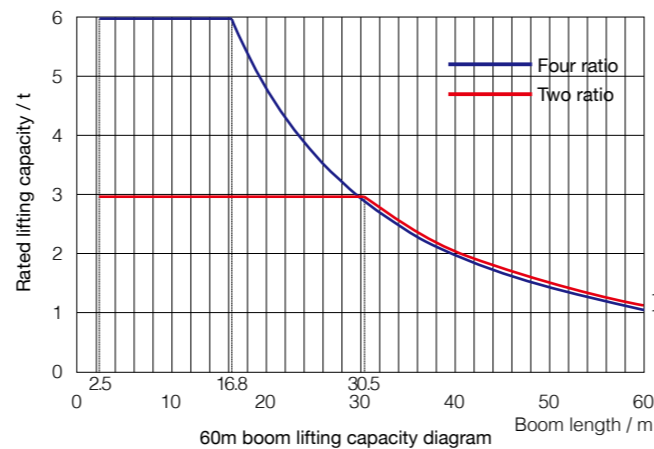


Load diagrams

Range	Max. lifting capacity	18	20	22	25	28	30	32	35	38	
60m	2.5~30.5m/3t				3.00				2.81	2.51	2.26
	2.5~16.8m/6t	5.51	4.87	4.35	3.73	3.25	2.98	2.75	2.45	2.20	
	2.5~33.3m/3t				3.00				2.83	2.55	
55m	2.5~18.4m/6t	6.00	5.43	4.85	4.17	3.64	3.35	3.09	2.77	2.49	
	2.5~33.3m/3t				3.00				2.83	2.56	
50m	2.5~18.4m/6t	6.00	5.44	4.86	4.18	3.65	3.36	3.10	2.77	2.50	
	2.5~33.3m/3t				3.00				2.84	2.56	
45m	2.5~18.4m/6t	6.00	5.45	4.87	4.19	3.66	3.36	3.11	2.78	2.50	
	2.5~33.3m/3t				3.00				2.84	2.57	
40m	2.5~18.4m/6t	6.00	5.46	4.88	4.20	3.66	3.37	3.11	2.78	2.51	
	2.5~33.3m/3t				3.00				2.84		
35m	2.5~18.4m/6t	6.00	5.46	4.88	4.20	3.66	3.37	3.11	2.78		

Range	Max. lifting capacity	40	42	45	48	50	52	55	57	60
60m	2.5~30.5m/3t	2.12	1.99	1.81	1.66	1.57	1.48	1.37	1.30	1.20
	2.5~16.8m/6t	2.06	1.93	1.75	1.60	1.51	1.42	1.31	1.24	1.14
	2.5~33.3m/3t	2.39	2.25	2.05	1.89	1.79	1.69	1.57		
55m	2.5~18.4m/6t	2.33	2.19	1.99	1.83	1.73	1.63	1.51		
	2.5~33.3m/3t	2.40	2.25	2.06	1.89	1.79				
50m	2.5~18.4m/6t	2.34	2.19	2.00	1.83	1.73				
	2.5~33.3m/3t	2.40	2.26	2.06						
45m	2.5~18.4m/6t	2.34	2.20	2.00						
	2.5~33.3m/3t	2.41								
40m	2.5~18.4m/6t	2.35								

Load Capacity Diagram



Mechanisms

	Model	Power	Speed
Slewing	SHJ100A3	2x4kW	0~0.8r/min
Trolleying	SXJ33.62B	3.3/2.2kW	50/25m/min
Lifting	SQJ03N	24/24/5.4 kW	1.5t 80m/min
			3t 40m/min
			3t 40m/min
			6t 20m/min
			6t 4.4m/min
Power voltage	380V(±10%)	Power frequency	50Hz

Note: If working rope capacity is greater than 380m, please contact the manufacturer.

Packing List

No.	Name	Shape	L(m)	B(m)	H(m)	Weight of single piece (t)	Qty.
1	Boom section I		10.19	1.45	1.36	1.30	1
2	Boom section II		10.19	1.32	1.30	0.83	1
3	Boom section III		5.19	1.32	1.30	0.42	1
4	Boom section IV		10.19	1.32	1.30	0.79	1
5	Boom section V		10.19	1.32	1.30	0.69	1
6	Boom section VI		5.19	1.32	1.30	0.34	1
7	Boom section VII		10.19	1.32	1.30	0.63	1
8	Boom section VIII		0.88	1.45	1.46	0.10	1
9	Tower cap		9.53	1.42	1.78	2.69	1
10	Hook		0.92	0.22	1.09	0.24	1
11	Climbing frame		6.63	2.26	2.14	3.25	1
12	Slewing assembly		2.20	2.20	2.03	3.23	1
13	Loading dolly		1.30	1.56	0.68	0.29	1
14	Rear boom section of balance boom		6.08	1.36	0.62	0.76	1
15	Front boom section of balance boom		6.28	1.39	0.58	0.79	1
16	Full set of cab		1.85	1.20	2.20	0.40	1
17	Basic section		2.83	1.92	1.92	1.06	1
18	Standard section		2.80	1.76	1.74	0.88	13