



QUALITY CHANGES THE WORLD

QUALITY CHANGES THE WORLD

SANY

QUALITY CHANGES THE WORLD



SANY TOWER CRANE SYT80(T6011-6)

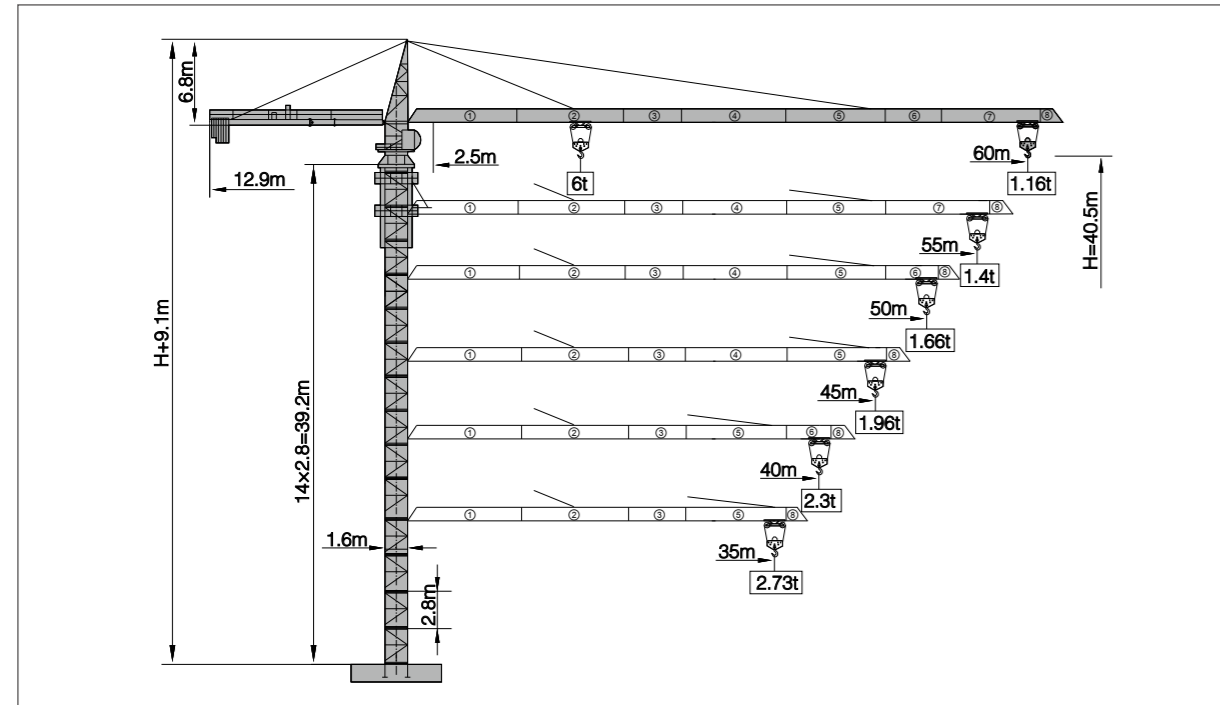
SANY HEAVY INDUSTRY CO.,LTD.

Address: SANY Industrial Park, Economic and Technological Development Zone,
Changsha, Hunan, China.
Service Hotline: +0086-4006-098-318
Email: crd@sany.com.cn
For more information, please visit: www.sanygroup.com

For our consistent improvement in technology, specifications may change without notice.
The machines illustrated may show optional equipment which can be supplied at additional cost.

Distributed By:

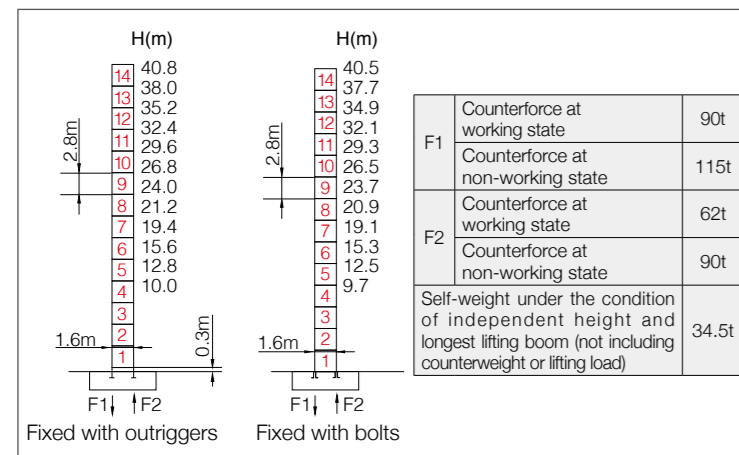
Jib Length & Tip Load



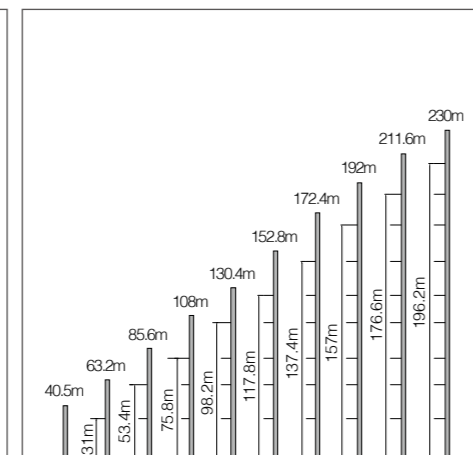
Counter-jib Ballast

Boom length (m)	Balance jib length(m)	Total weight of counterweight (kg)	2660kg counterweight (blocks)	1500kg counterweight (blocks)
60	12.9	16300	5	2
55	12.9	14800	5	1
50	12.9	13300	5	0
45	12.9	12140	4	1
40	12.9	9480	3	1
35	12.9	7980	3	0

Masts



Anchorage

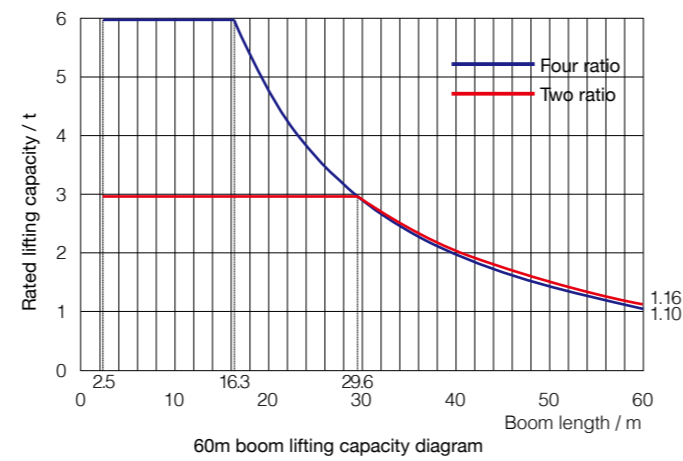


Load diagrams

Range	Max. lifting capacity	17	20	23	26	29	32	35	38	40
60m	2.5~29.5m/3t			3.00			2.77	2.48	2.23	2.08
	2.5~16.3m/6t	5.81	4.80	4.07	3.51	3.07	2.71	2.42	2.17	2.02
55m	2.5~30.7m/3t			3.00			2.86	2.56	2.31	2.16
	2.5~16.9m/6t	5.99	4.96	4.20	3.63	3.17	2.80	2.50	2.25	2.10
50m	2.5~31.5m/3t			3.00			2.96	2.65	2.38	2.23
	2.5~17.3m/6t	6.00	5.11	4.33	3.74	3.27	2.90	2.59	2.32	2.17
45m	2.5~32.1m/3t			3.00			2.70	2.44	2.28	
	2.5~17.6m/6t	6.00	5.21	4.42	3.82	3.34	2.96	2.64	2.38	2.22
40m	2.5~32.3m/3t			3.00			2.72	2.46	2.30	
	2.5~17.7m/6t	6.00	5.24	4.45	3.84	3.37	2.98	2.66	2.40	2.24
35m	2.5~32.4m/3t			3.00			2.73			
	2.5~17.8m/6t	6.00	5.26	4.46	3.85	3.38	2.99	2.67		

Range	Max. lifting capacity	41	45	47	50	53	55	56	60
60m	2.5~29.5m/3t	2.02	1.78	1.68	1.54	1.42	1.35	1.31	1.16
	2.5~16.3m/6t	1.96	1.72	1.62	1.48	1.36	1.29	1.25	1.10
55m	2.5~30.7m/3t	2.09	1.85	1.74	1.60	1.48	1.40		
	2.5~16.9m/6t	2.03	1.79	1.68	1.54	1.42	1.34		
50m	2.5~31.5m/3t	2.16	1.91	1.81	1.66				
	2.5~17.3m/6t	2.10	1.85	1.75	1.60				
45m	2.5~32.1m/3t	2.21	1.96						
	2.5~17.6m/6t	2.15	1.90						

Load Capacity Diagram



Mechanisms

	Model	Power	Speed
Slewing	SHJ100A3	2x4kW	0~0.8r/min
Trolleying	SXJ33.62B	3.3/2.2kW	50 / 25m/min
Lifting	SQJ03N	24/24/5.4 kW	1.5t 80m/min
			3t 40m/min
			3t 8.8m/min
			3t 40m/min
			6t 20m/min
6t 4.4m/min			
Power voltage	380V(±10%)	Power frequency	50Hz

Note: If working rope capacity is greater than 380m, please contact the manufacturer.

Packing List

No.	Name	Shape	L(m)	B(m)	H(m)	Weight of single piece (t)	Qty.
1	Boom section I		10.17	1.45	1.33	1.30	1
2	Boom section II		10.19	1.32	1.38	0.83	1
3	Boom section III		5.19	1.32	1.37	0.42	1
4	Boom section IV		10.19	1.32	1.37	0.79	1
5	Boom section V		10.19	1.32	1.37	0.69	1
6	Boom section VI		5.19	1.32	1.37	0.34	1
7	Boom section VII		10.19	1.32	1.37	0.63	1
8	Boom section VIII		0.88	1.45	1.46	0.10	1
9	Tower cap		9.53	1.42	1.78	2.69	1
10	Hook		0.92	0.22	1.09	0.24	1
11	Climbing frame		6.63	2.26	2.14	3.25	1
12	Slewing assembly		2.20	2.20	2.03	3.23	1
13	Loading dolly		1.30	1.56	0.68	0.29	1
14	Rear boom section of balance boom		6.08	1.36	0.62	0.76	1
15	Front boom section of balance boom		6.28	1.39	0.58	0.79	1
16	Full set of cab		1.85	1.20	2.20	0.40	1
17	Basic section		2.83	1.92	1.92	1.06	1
18	Standard section		2.80	1.76	1.74	0.88	13