

QUALITY CHANGES THE WORLD



QUALITY CHANGES THE WORLD

SANY

QUALITY CHANGES THE WORLD



**SANY TOWER CRANE
SYT80(T5710-6)**

SANY HEAVY INDUSTRY CO.,LTD.

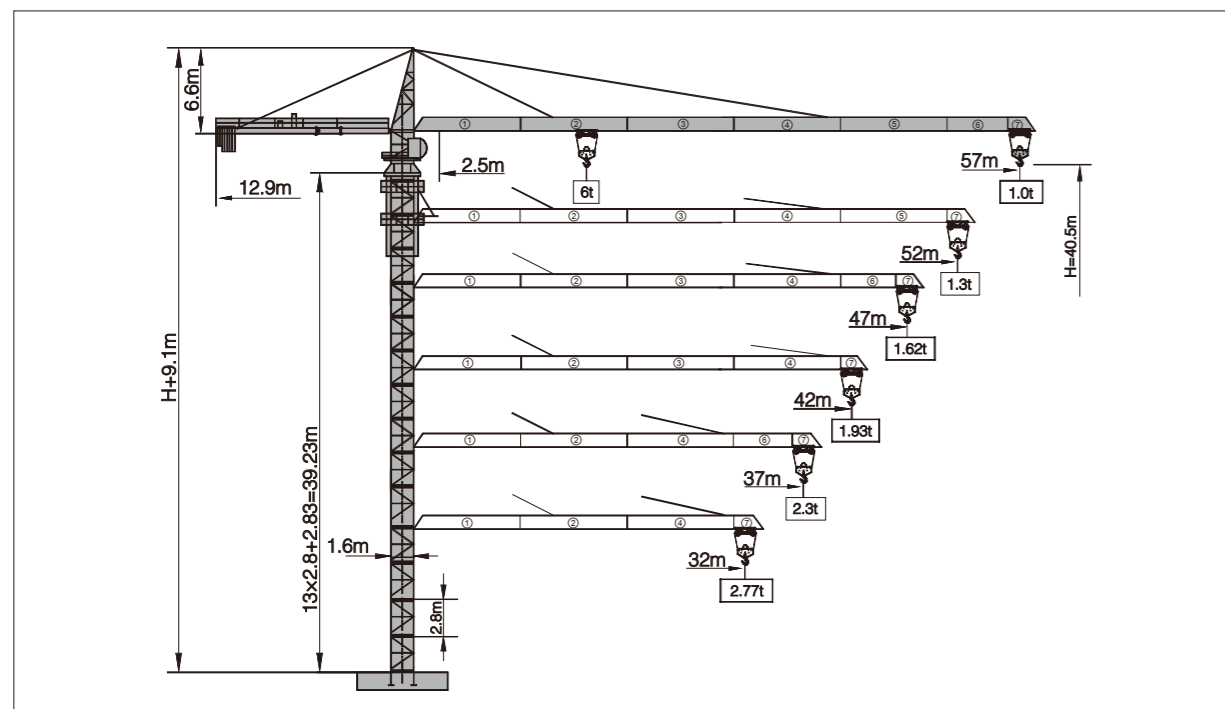
Address: SANY Industrial Park, Economic and Technological Development Zone,
Changsha, Hunan, China.
Service Hotline: +0086-4006-098-318
Email: crd@sany.com.cn
For more information, please visit: www.sanygroup.com

For our consistent improvement in technology, specifications may change without notice.
The machines illustrated may show optional equipment which can be supplied at additional cost.

Distributed By:

www.sany.com.cn

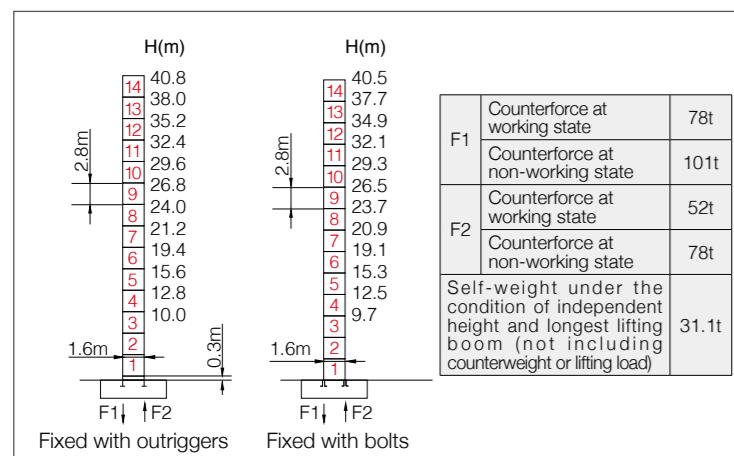
Jib Length & Tip Load



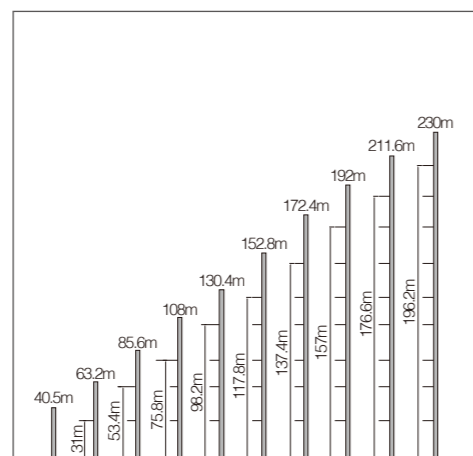
Counter-jib Ballast

Boom length (m)	Balance jib length(m)	Total weight of counterweight (kg)	2660kg counterweight (blocks)	1500kg counterweight (blocks)
57	12.9	13640	4	2
52	12.9	12140	4	1
47	12.9	12140	4	1
42	12.9	10980	3	2
37	12.9	8320	2	2
32	12.9	8320	2	2

Masts



Anchorage

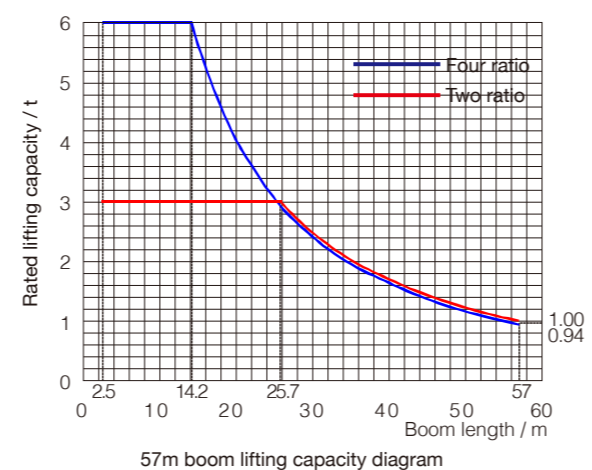


Load diagrams

Range	Max. lifting capacity	17	20	23	25	27	30	32	35	37
57m	☺	3.00				2.82	2.47	2.27	2.02	1.88
	☹	4.85	4.00	3.37	3.04	2.76	2.41	2.21	1.96	1.82
52m	☺	3.00				2.72	2.51	2.24	2.08	
	☹	5.31	4.38	3.70	3.34	3.04	2.66	2.45	2.18	2.02
47m	☺	3.00				2.90	2.68	2.39	2.23	
	☹	5.64	4.66	3.94	3.56	3.24	2.84	2.62	2.33	2.17
42m	☺	3.00				2.96	2.73	2.44	2.27	
	☹	5.74	4.74	4.02	3.63	3.30	2.90	2.67	2.38	2.21
37m	☺	3.00				2.99	2.76	2.47	2.30	
	☹	5.79	4.79	4.05	3.67	3.34	2.93	2.70	2.41	2.24
32m	☺	3.00				2.77				
	☹	5.81	4.80	4.07	3.68	3.35	2.94	2.71		

Range	Max. lifting capacity	40	42	45	47	50	52	55	57
57m	☺	1.69	1.58	1.43	1.34	1.23	1.16	1.06	1.00
	☹	1.63	1.52	1.37	1.28	1.17	1.10	1.00	0.94
52m	☺	1.88	1.76	1.60	1.50	1.38	1.30		
	☹	1.82	1.70	1.54	1.44	1.32	1.24		
47m	☺	2.01	1.89	1.72	1.62				
	☹	1.95	1.83	1.66	1.56				
42m	☺	2.05	1.93						
	☹	1.99	1.87						

Load Capacity Diagram



Mechanisms

	Model	Power	Speed
Slewing	SHJ120A7.5R	1 × 7.5kW	0 ~ 0.7r/min
Trolleying	SXJ33.62B	3.3/2.2kW	50/25m/min
Lifting	SQJ03N	24/24/5.4kW	☺ 1.5t 80m/min
			☺ 3t 40m/min
			☹ 3t 8.8m/min
			☹ 6t 20m/min
Power voltage	380V(± 10%)	Power frequency	50Hz

Note: If working rope capacity is greater than 380m, please contact the manufacturer.

Packing List

No.	Name	Shape	L(m)	B(m)	H(m)	Weight of single piece (t)	Qty.
1	Boom section I		10.13	1.48	1.33	1.23	1
2	Boom section II		10.13	1.32	1.26	0.80	1
3	Boom section III		10.13	1.32	1.24	0.67	1
4	Boom section IV		10.13	1.32	1.26	0.67	1
5	Boom section V		10.13	1.32	1.24	0.59	1
6	Boom section VI		5.13	1.33	1.23	0.27	1
7	Boom section VII		2.52	1.48	1.46	0.16	1
8	Tower cap		9.56	1.42	1.87	2.58	1
9	Hook		0.92	0.22	1.09	0.24	1
10	Climbing frame		6.63	2.26	2.14	3.53	1
11	Slewing assembly		2.20	2.20	2.03	3.23	1
12	Loading dolly		1.30	1.56	0.68	0.29	1
13	Rear boom section of balance boom		6.08	1.37	0.62	0.78	1
14	Front boom section of balance boom		6.26	1.39	0.58	0.80	1
15	Full set of cab		1.85	1.20	2.20	0.40	1
16	Basic section		2.83	1.92	1.92	1.05	1
17	Strengthen section		2.80	1.76	1.74	0.87	3
18	Standard section		2.80	1.76	1.74	0.76	10