



QUALITY  
CHANGES  
THE  
WORLD

QUALITY CHANGES THE WORLD

**SANY**

QUALITY CHANGES THE WORLD



**SANY TOWER CRANE  
SYT125E2 (T6515-8)**

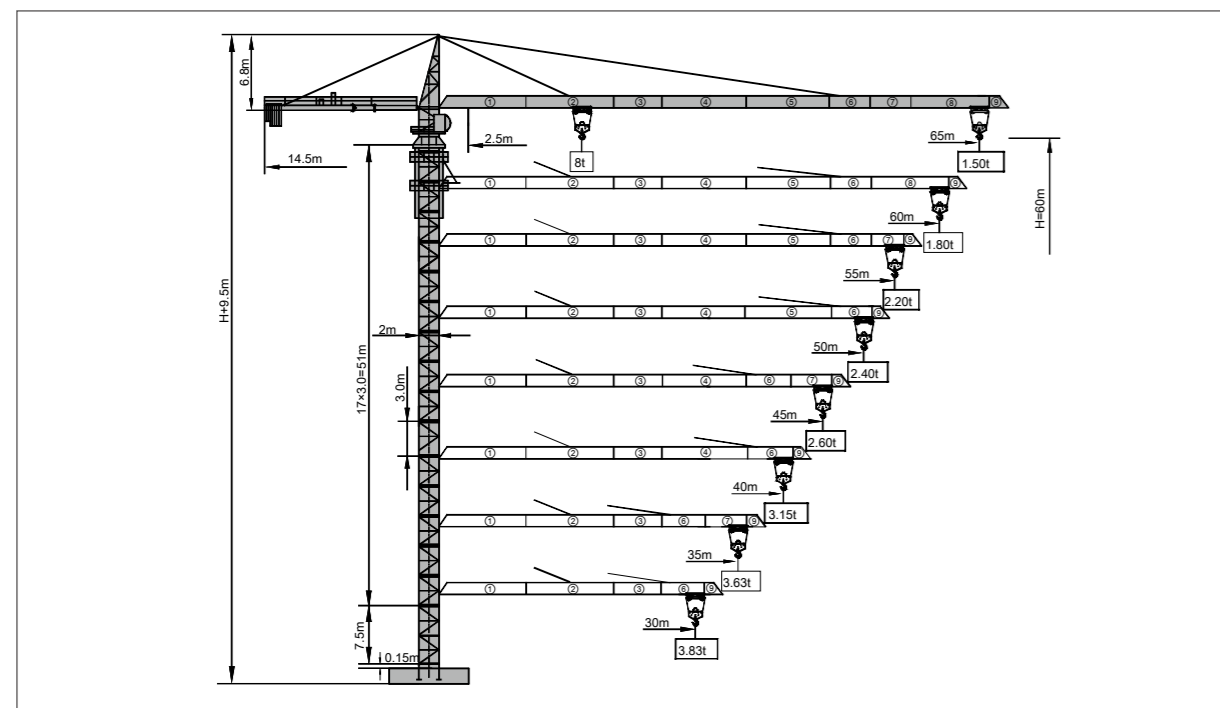
**SANY HEAVY INDUSTRY CO.,LTD.**

Address: SANY Industrial Park, Economic and Technological Development Zone,  
Changsha, Hunan, China.  
Service Hotline: +0086-4006-098-318  
Email: crd@sany.com.cn  
For more information, please visit: [www.sanygroup.com](http://www.sanygroup.com)

For our consistent improvement in technology, specifications may change without notice.  
The machines illustrated may show optional equipment which can be supplied at additional cost.

Distributed By:

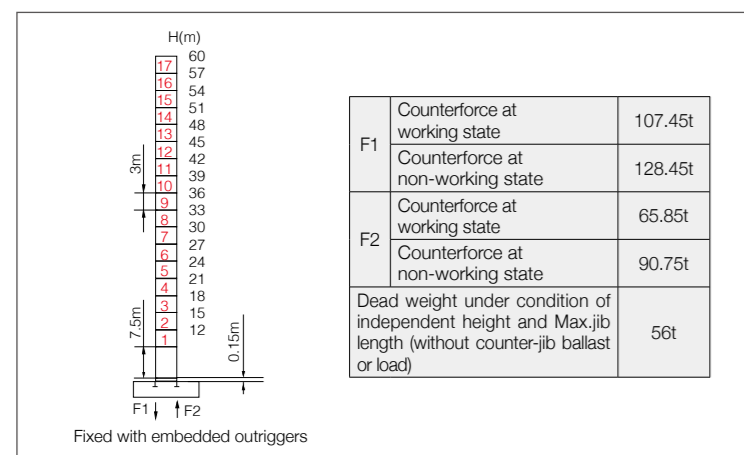
Jib Length & Tip Load



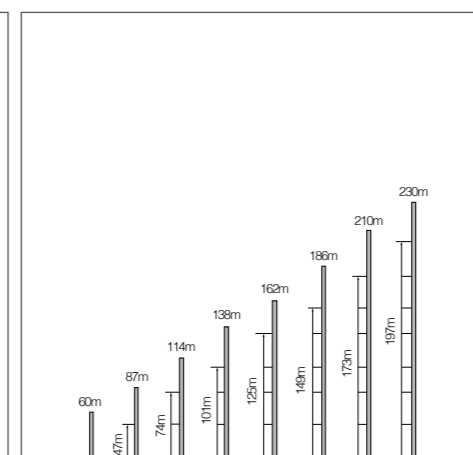
Counter-jib Ballast Combination

Jib length (m)	Counter-jib length(m)	Weight of counter-jib ballast(kg)	2650kg Counter-jib ballast(block)	1750kg Counter-jib ballast(block)
65	14.5	18500	5	3
60	14.5	16750	5	2
55	14.5	15850	4	3
50	14.5	14100	4	2
45	14.5	11450	3	2
40	14.5	10600	4	0
35	14.5	8800	2	2
30	14.5	7050	2	1

Masts



Anchorage

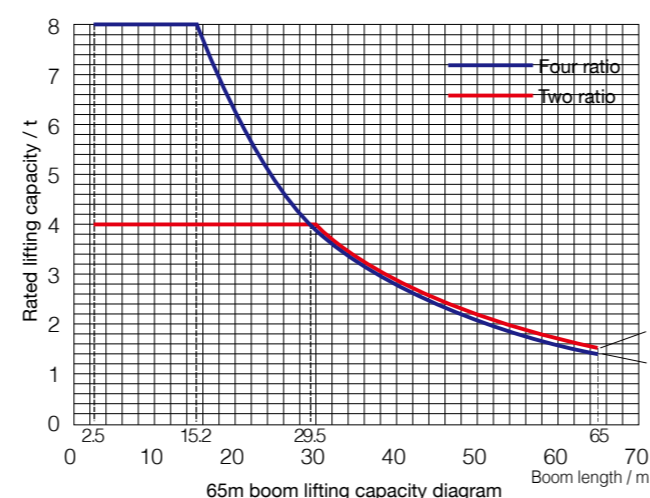


Load diagrams

Range	Max. lifting capacity	18	20	22	25	28	30	32	35	38	40	
65m	2.5~29.5m/4t			4.00			3.96	3.71	3.36	3.07	2.88	
	2.5~15.2m/8t	7.00	6.25	5.60	4.85	4.22	3.85	3.60	3.25	2.96	2.77	
60m	2.5~32.0m/4t				4.00							
	2.5~17.4m/8t	7.71	6.82	6.10	5.25	4.59	4.22	3.90	3.49	3.15	2.95	
55m	2.5~34.1m/4t				4.00				3.87	3.51	3.29	
	2.5~18.5m/8t	8.00	7.31	6.55	5.64	4.93	4.54	4.20	3.76	3.40	3.19	
50m	2.5~33.1m/4t				4.00							
	2.5~18.0m/8t	8.00	7.08	6.34	5.46	4.77	4.39	4.06	3.63	3.28	3.07	
45m	2.5~31.7m/4t			4.00					3.96	3.55	3.21	3.02
	2.5~17.3m/8t	7.62	6.74	6.03	5.19	4.53	4.17	3.85	3.45	3.11	2.91	
40m	2.5~32.9m/4t				4.00							
	2.5~17.9m/8t	7.93	7.02	6.28	5.41	4.72	4.35	4.02	3.60	3.25	3.04	
35m	2.5~32.3m/4t				4.00							
	2.5~17.5m/8t	7.77	6.88	6.15	5.29	4.62	4.25	3.93	3.52			
30m	2.5~28.9m/4t				4.00				3.83			
	2.5~15.8m/8t	6.86	6.06	5.42	4.65	4.05	3.72					

Range	Max. lifting capacity	42	45	48	50	52	55	58	60	63	65
65m	2.5~29.5m/4t	2.70	2.48	2.28	2.16	2.05	1.90	1.76	1.68	1.57	1.50
	2.5~15.2m/8t	2.60	2.37	2.17	2.05	1.94	1.79	1.66	1.57	1.46	1.39
60m	2.5~32.0m/4t	2.87	2.63	2.42	2.30	2.18	2.03	1.89	1.80		
	2.5~17.4m/8t	2.77	2.53	2.32	2.19	2.08	1.92	1.78	1.69		
55m	2.5~34.1m/4t	3.10	2.85	2.62	2.49	2.37	2.20				
	2.5~18.5m/8t	2.99	2.74	2.52	2.38	2.26	2.09				
50m	2.5~33.1m/4t	2.99	2.75	2.53	2.40						
	2.5~18.0m/8t	2.89	2.64	2.42	2.29						
45m	2.5~31.7m/4t	2.84	2.60								
	2.5~17.3m/8t	2.73	2.49								

Load Capacity Diagram



Mechanisms

	Model	Power	Speed
Slewing	SHJ100A	2 × 5.5kW	0 ~ 0.8r/min
Trolleying	SXJ33.62P	4kW	0 ~ 55m/min
Lifting	SQJ04D	37/37kW	2t 100m/min
			4t 50m/min
			4t 50m/min
			8t 25m/min
Power voltage	380V(± 10%)	Power frequency	50Hz

Note: if working rope capacity is greater than 500m, please contact manufacturer.

Packing List

No.	Name	Shape	L(m)	B(m)	H(m)	Weight of single piece (t)	Qty.
1	Boom section I		10.16	1.65	1.48	1.52	1
2	Boom section II		10.16	1.51	1.42	1.04	1
3	Boom section III		5.16	1.46	1.38	0.51	1
4	Boom section IV		10.16	1.46	1.36	0.90	1
5	Boom section V		10.16	1.46	1.36	0.86	1
6	Boom section VI		5.16	1.46	1.38	0.43	1
7	Boom section VII		5.16	1.46	1.36	0.37	1
8	Boom section VIII		10.15	1.46	1.35	0.60	1
9	Boom section IX		0.91	1.64	1.52	0.11	1
10	Tower cap		9.79	1.68	2.46	2.95	1
11	Hook		0.92	0.22	1.09	0.24	1
12	Climbing frame		7.66	3.11	2.56	4.16	1
13	Slewing assembly		2.59	2.59	2.74	4.03	1
14	Luffing dolly		1.27	1.70	0.72	0.30	1
15	Counter-jib sectionI		4.78	1.51	0.64	0.75	1
16	Counter-jib sectionII		9.08	1.51	0.66	1.28	1
17	Cab		1.92	1.25	2.25	0.75	1
18	Basic section		2.10	2.11	7.76	4.18	1
19	Standard section		3.53	2.21	0.70	1.45	17
20	Lifting mechanism		1.97	1.95	0.87	1.97	1