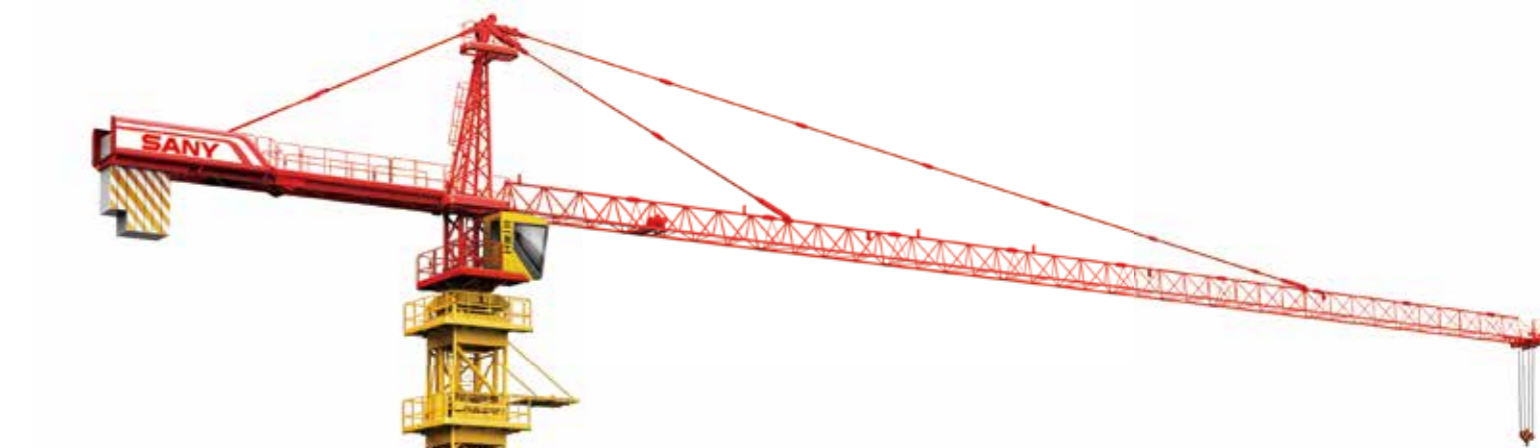


QUALITY CHANGES THE WORLD



SANY

QUALITY CHANGES THE WORLD



QUALITY CHANGES THE WORLD



**SANY TOWER CRANE
SYT125 (T6515-8)**

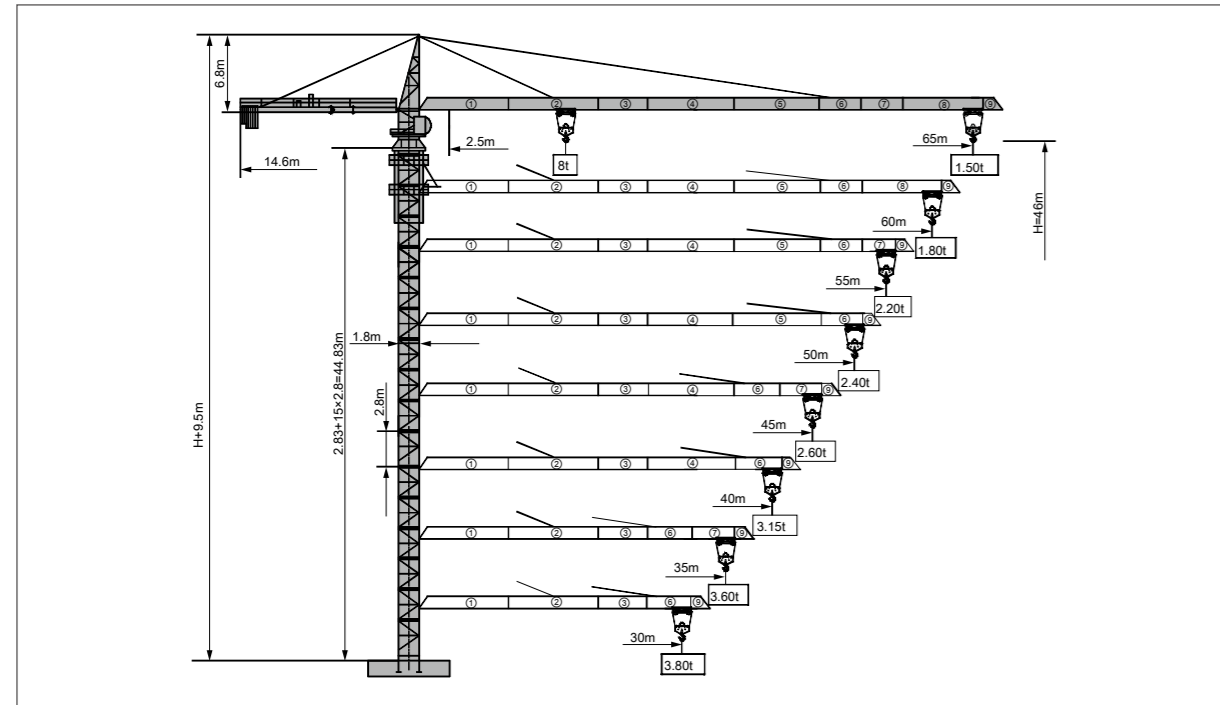
SANY HEAVY INDUSTRY CO.,LTD.

Address: SANY Industrial Park, Economic and Technological Development Zone,
Changsha, Hunan, China.
Service Hotline: +0086-4006-098-318
Email: crd@sany.com.cn
For more information, please visit: www.sanygroup.com

For our consistent improvement in technology, specifications may change without notice.
The machines illustrated may show optional equipment which can be supplied at additional cost.

Distributed By:

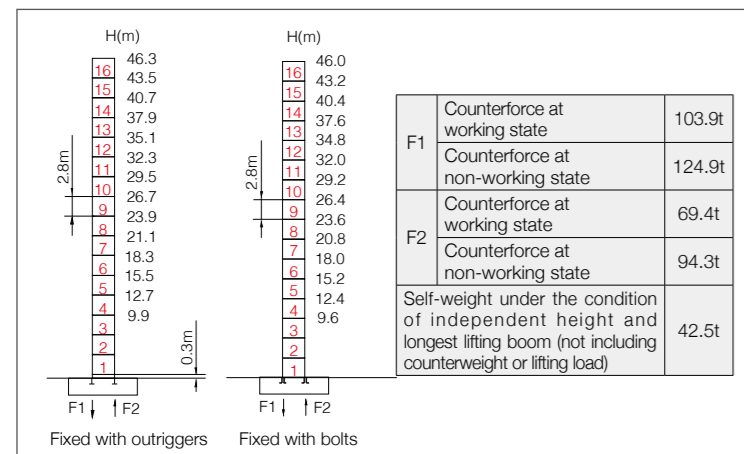
Jib Length & Tip Load



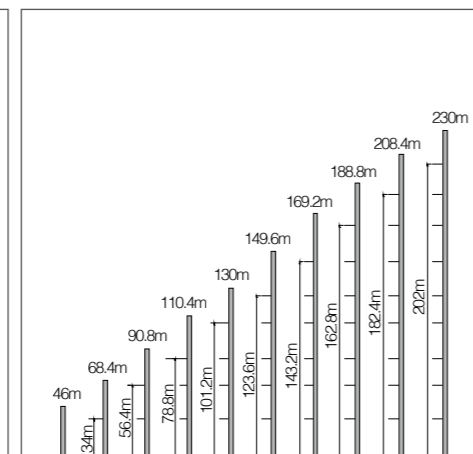
Counter-jib Ballast

Boom length (m)	Balance jib length(m)	Total weight of counterweight (kg)	2650kg counterweight (blocks)	1750kg counterweight (blocks)
65	14.6	18500	5	3
60	14.6	16750	5	2
55	14.6	15850	4	3
50	14.6	14100	4	2
45	14.6	11450	3	2
40	14.6	10600	4	0
35	14.6	8800	2	2
30	14.6	7050	2	1

Masts



Anchorage

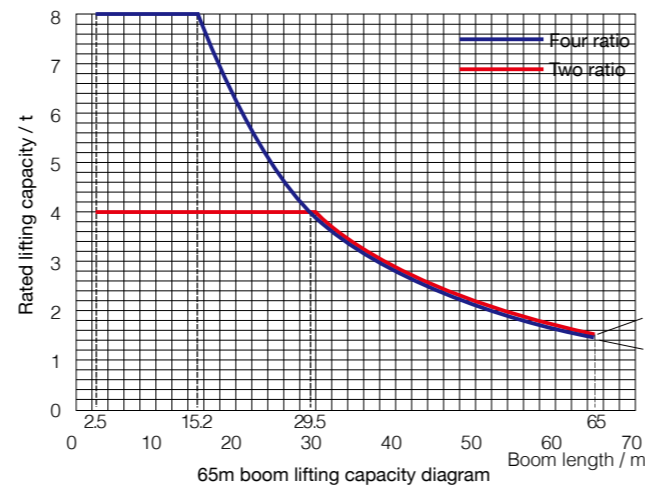


Load diagrams

Range	Max. lifting capacity	18	20	22	25	28	30	32	35	38	40
65m	2.5~29.5m/4t			4.00			3.92	3.68	3.33	3.04	2.86
	2.5~15.2m/8t	7.00	6.25	5.60	4.85	4.22	3.85	3.60	3.25	2.96	2.78
	2.5~31.9m/4t			4.00			3.98	3.98	3.58	3.24	3.04
60m	2.5~17.35m/8t	7.67	6.79	6.08	5.24	4.58	4.22	3.90	3.50	3.16	2.96
	2.5~33.95m/4t			4.00				3.86	3.50	3.28	
55m	2.5~18.44m/8t	8.00	7.29	6.53	5.63	4.93	4.54	4.21	3.77	3.41	3.20
	2.5~33.02m/4t			4.00				3.73	3.38	3.17	
50m	2.5~17.95m/8t	7.97	7.07	6.33	5.45	4.77	4.40	4.07	3.65	3.30	3.09
	2.5~31.65m/4t			4.00				3.95	3.55	3.21	3.01
45m	2.5~17.22m/8t	7.61	6.74	6.03	5.19	4.54	4.18	3.87	3.46	3.13	2.93
	2.5~32.81m/4t			4.00				3.70	3.35	3.15	
40m	2.5~17.84m/8t	7.92	7.02	6.29	5.42	4.74	4.36	4.04	3.62	3.27	3.07
	2.5~32.07m/4t			4.00				3.60			
35m	2.5~17.45m/8t	7.72	6.84	6.12	5.27	4.61	4.25	3.93	3.52		
	2.5~28.76m/4t			4.00				3.80			
30m	2.5~15.69m/8t	6.82	6.04	5.40	4.64	4.05	3.72				

Range	Max. lifting capacity	42	45	48	50	52	55	58	60	63	65
65m	2.5~29.5m/4t	2.69	2.46	2.26	2.15	2.04	1.89	1.76	1.68	1.57	1.50
	2.5~15.2m/8t	2.61	2.38	2.18	2.07	1.96	1.81	1.68	1.60	1.49	1.42
	2.5~31.9m/4t	2.86	2.63	2.42	2.29	2.18	2.02	1.89	1.80		
60m	2.5~17.35m/8t	2.78	2.54	2.34	2.21	2.10	1.94	1.80	1.72		
	2.5~33.95m/4t	3.09	2.84	2.62	2.49	2.37	2.20				
55m	2.5~18.44m/8t	3.01	2.76	2.54	2.40	2.28	2.12				
	2.5~33.02m/4t	2.99	2.74	2.53	2.40						
50m	2.5~17.95m/8t	2.91	2.66	2.45	2.32						
	2.5~31.65m/4t	2.84	2.60								
45m	2.5~17.22m/8t	2.75	2.52								

Load Capacity Diagram



Mechanisms

	Model	Power	Speed
Slewing	SHJ100A	2x5.5kW	0~0.8r/min
Trolleying	SXJ33.62P	4kW	0~55m/min
Lifting	SQJ04D	37/37kW	2t 100m/min
			4t 50m/min
			8t 25m/min
Power voltage	380V(±10%)	Power frequency	50Hz

Note: If working rope capacity is greater than 500m, please contact the manufacturer.

Packing List

No.	Name	Shape	L(m)	B(m)	H(m)	Weight of single piece (t)	Qty.
1	Boom section I		10.16	1.65	1.48	1.52	1
2	Boom section II		10.16	1.51	1.42	1.04	1
3	Boom section III		5.16	1.46	1.38	0.51	1
4	Boom section IV		10.16	1.46	1.36	0.90	1
5	Boom section V		10.16	1.46	1.36	0.86	1
6	Boom section VI		5.16	1.46	1.38	0.43	1
7	Boom section VII		5.16	1.46	1.36	0.37	1
8	Boom section VIII		10.15	1.46	1.35	0.60	1
9	Boom section IX		0.91	1.64	1.52	0.11	1
10	Tower cap		9.79	1.68	2.46	2.95	1
11	Hook		0.92	0.22	1.09	0.24	1
12	Climbing frame		6.66	2.48	2.42	2.27	1
13	Slewing assembly		2.44	2.36	2.29	3.47	1
14	Loading dolly		1.27	1.70	0.72	0.30	1
15	Rear boom section of balance boom		4.78	1.51	0.64	0.75	1
16	Front boom section of balance boom		9.08	1.51	0.66	1.28	1
17	Full set of cab		1.92	1.25	2.25	0.75	1
18	Basic section		2.12	2.12	2.83	1.12	1
19	Fortified section		1.99	1.96	2.80	1.02	3
20	Standard section		1.99	1.96	2.80	0.96	12