



QUALITY  
CHANGES  
THE  
WORLD

QUALITY CHANGES THE WORLD

**SANY**

QUALITY CHANGES THE WORLD



SANY TOWER CRANE  
SYT100 (T6515-6)

**SANY HEAVY INDUSTRY CO.,LTD.**

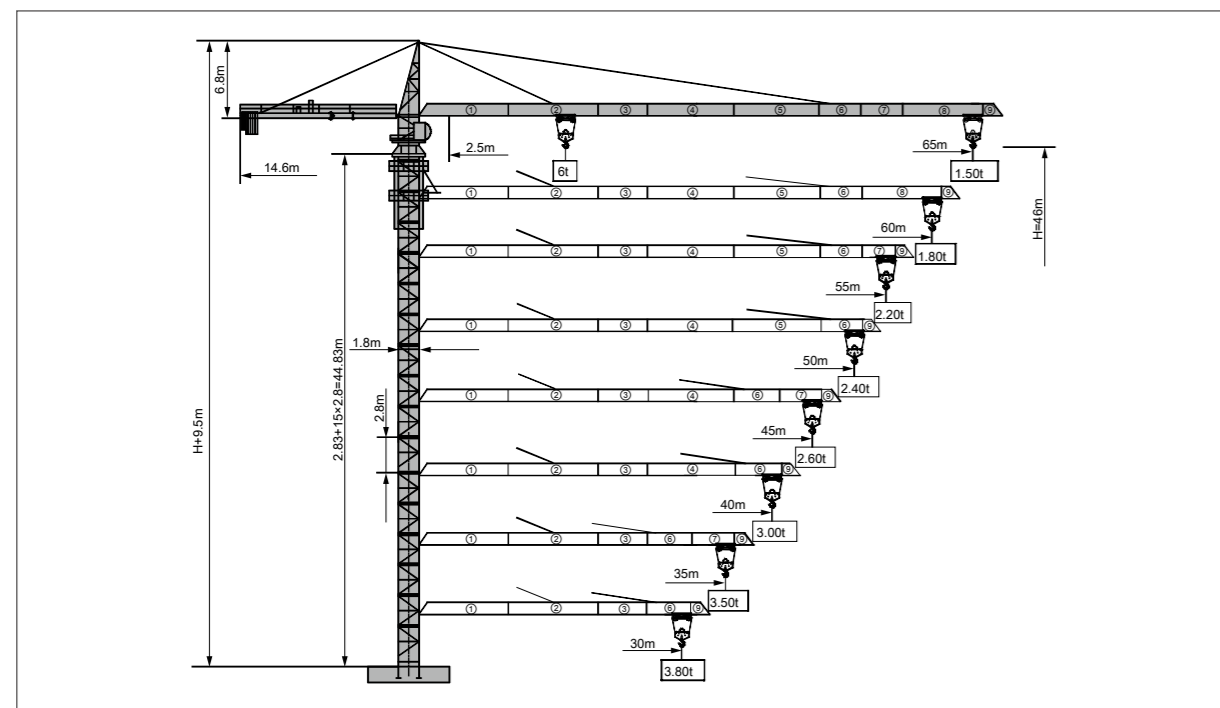
Address: SANY Industrial Park, Economic and Technological Development Zone,  
Changsha, Hunan, China.  
Service Hotline: +0086-4006-098-318  
Email: crd@sany.com.cn  
For more information, please visit: [www.sanygroup.com](http://www.sanygroup.com)

Distributed By:

For our consistent improvement in technology, specifications may change without notice.  
The machines illustrated may show optional equipment which can be supplied at additional cost.

[www.sany.com.cn](http://www.sany.com.cn)

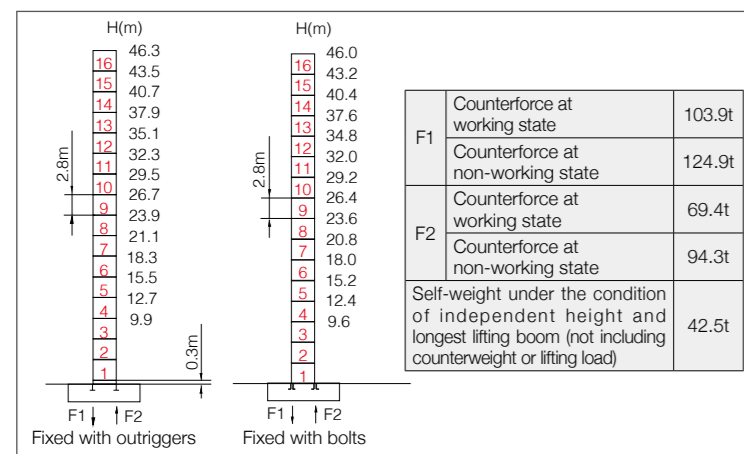
Jib Length & Tip Load



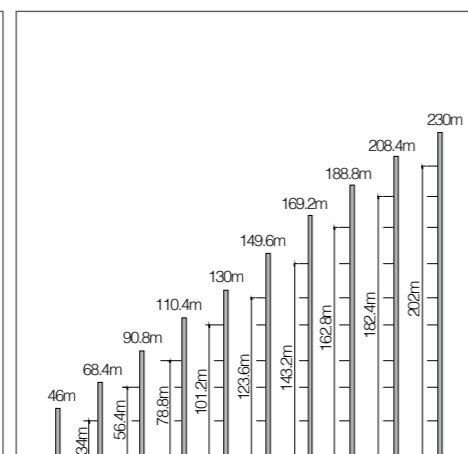
Counter-jib Ballast

Boom length (m)	Balance jib length(m)	Total weight of counterweight (kg)	2650kg counterweight (blocks)	1750kg counterweight (blocks)
65	14.6	18500	5	3
60	14.6	16750	5	2
55	14.6	15850	4	3
50	14.6	14100	4	2
45	14.6	11450	3	2
40	14.6	10600	4	0
35	14.6	8800	2	2
30	14.6	7050	2	1

Masts



Anchorage



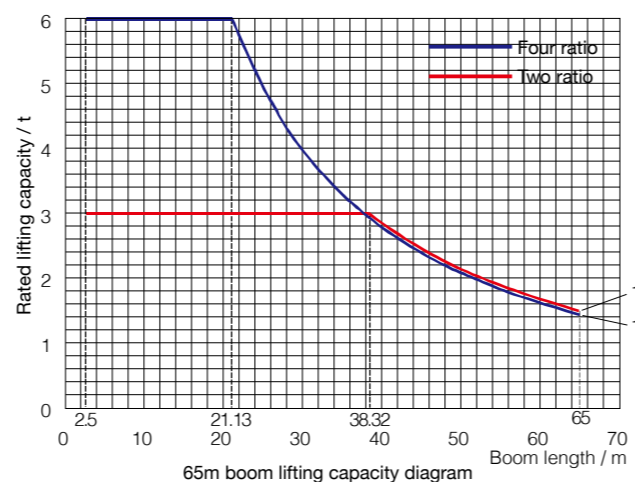
Load diagrams

Range	Max. lifting capacity	18	20	22	25	28	30	32	35	38	40
65m	2.5~38.32m/3t					3.00					2.85
	2.5~21.13m/6t	6.00		5.72	4.93	4.31	3.97	3.67	3.29	2.97	2.79
	2.5~40.32m/3t					4.00					
60m	2.5~22.21m/6t	6.00		5.23	4.58	4.22	3.90	3.50	3.17	2.97	
	2.5~42.99m/3t					4.00					
55m	2.5~23.65m/6t	6.00		5.63	4.93	4.55	4.21	3.78	3.42	3.22	
	2.5~41.82m/3t					3.00					
50m	2.5~23.02m/6t	6.00		5.45	4.78	4.40	4.08	3.66	3.31	3.11	
	2.5~40.10m/3t					3.00					
45m	2.5~22.09m/6t	6.00		5.20	4.55	4.19	3.88	3.48	3.14	2.95	
	2.5~40.00m/3t					3.00					
40m	2.5~23.27m/6t	6.00		5.28	4.62	4.26	3.94	3.54	3.20	3.00	
	2.5~35.00m/3t					3.00					
35m	2.5~22.71m/6t	6.00		5.23	4.57	4.21	3.90	3.50			
	2.5~30.00m/3t					3.00					
30m	2.5~20.38m/6t	6.00		5.49	4.73	4.13	3.80				

Range	Max. lifting capacity	42	45	48	50	52	55	58	60	63	65
65m	2.5~38.32m/3t	2.68	2.45	2.26	2.14	2.04	1.89	1.76	1.68	1.57	1.50
	2.5~21.13m/6t	2.62	2.39	2.20	2.08	1.98	1.83	1.70	1.62	1.51	1.44
	2.5~40.32m/3t	2.85	2.62	2.41	2.29	2.18	2.02	1.88	1.80		
60m	2.5~22.21m/6t	2.79	2.56	2.35	2.23	2.12	1.96	1.82	1.74		
	2.5~42.99m/3t	3.00	2.84	2.62	2.49	2.36	2.20				
55m	2.5~23.65m/6t	3.03	2.78	2.56	2.43	2.30	2.14				
	2.5~41.82m/3t	2.98	2.74	2.53	2.40						
50m	2.5~23.02m/6t	2.92	2.68	2.47	2.34						
	2.5~40.10m/3t	2.83	2.60								
45m	2.5~22.09m/6t	2.77	2.54								

Load Capacity Diagram



Mechanisms

	Model	Power	Speed
Slewing	SHJ100A	2x5.5kW	0~0.8r/min
Trolleying	SXJ33.62P	4kW	0~55m/min
Lifting	SQJ03NR	24/24kW	1.5t 80m/min
			3t 40m/min
			6t 20m/min
Power voltage	380V(±10%)	Power frequency	50Hz

Note: If working rope capacity is greater than 380m, please contact the manufacturer.

Packing List

No.	Name	Shape	L(m)	B(m)	H(m)	Weight of single piece (t)	Qty.
1	Boom section I		10.16	1.65	1.48	1.52	1
2	Boom section II		10.16	1.51	1.42	1.04	1
3	Boom section III		5.16	1.46	1.38	0.51	1
4	Boom section IV		10.16	1.46	1.36	0.90	1
5	Boom section V		10.16	1.46	1.36	0.86	1
6	Boom section VI		5.16	1.46	1.38	0.43	1
7	Boom section VII		5.16	1.46	1.36	0.37	1
8	Boom section VIII		10.15	1.46	1.35	0.60	1
9	Boom section IX		0.91	1.64	1.52	0.11	1
10	Tower cap		9.79	1.68	2.46	2.95	1
11	Hook		0.92	0.22	1.09	0.24	1
12	Climbing frame		6.66	2.48	2.42	2.27	1
13	Slewing assembly		2.44	2.36	2.29	3.47	1
14	Loading dolly		1.27	1.70	0.72	0.30	1
15	Rear boom section of balance boom		4.78	1.51	0.64	0.75	1
16	Front boom section of balance boom		9.08	1.51	0.66	1.28	1
17	Full set of cab		1.92	1.25	2.25	0.75	1
18	Basic section		2.12	2.12	2.83	1.12	1
19	Fortified section		1.99	1.96	2.80	1.02	3
20	Standard section		1.99	1.96	2.80	0.96	12