



QUALITY
CHANGES
THE
WORLD

QUALITY CHANGES THE WORLD

SANY

QUALITY CHANGES THE WORLD



**SANY TOWER CRANE
SYT315 (T7530-16)**

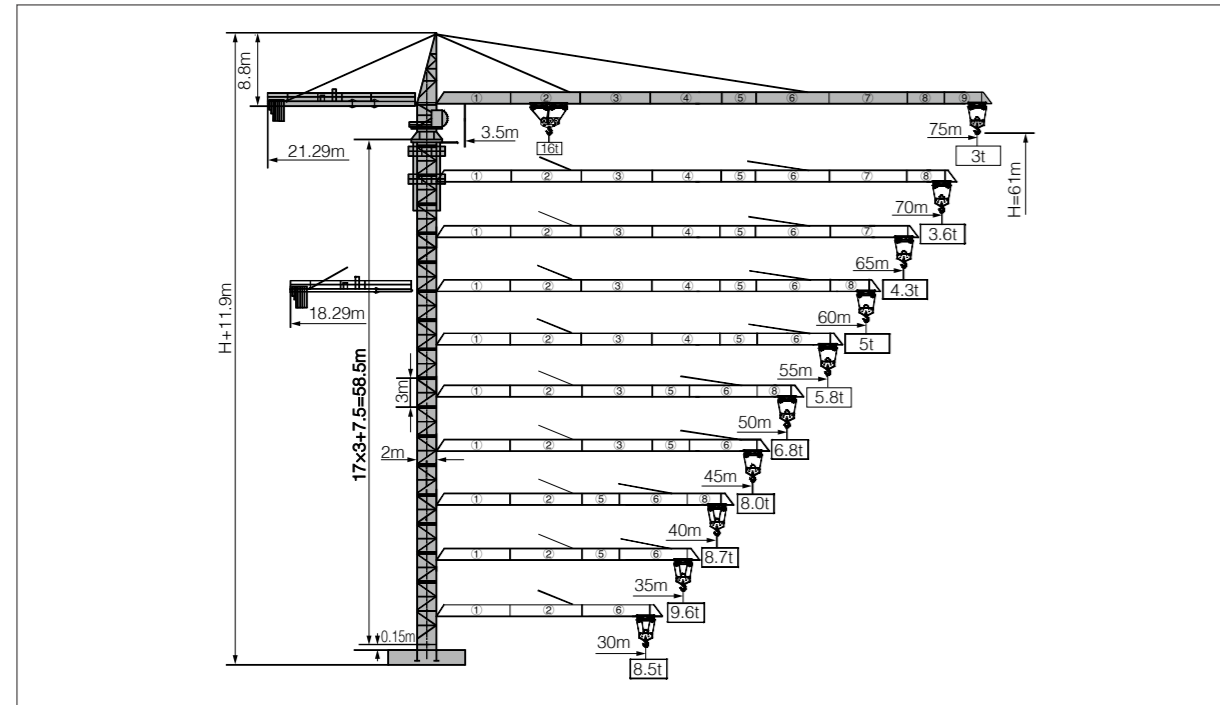
SANY HEAVY INDUSTRY CO.,LTD.

Address: SANY Industrial Park, Economic and Technological Development Zone,
Changsha, Hunan, China.
Service Hotline: +0086-4006-098-318
Email: crd@sany.com.cn
For more information, please visit: www.sanygroup.com

For our consistent improvement in technology, specifications may change without notice.
The machines illustrated may show optional equipment which can be supplied at additional cost.

Distributed By:

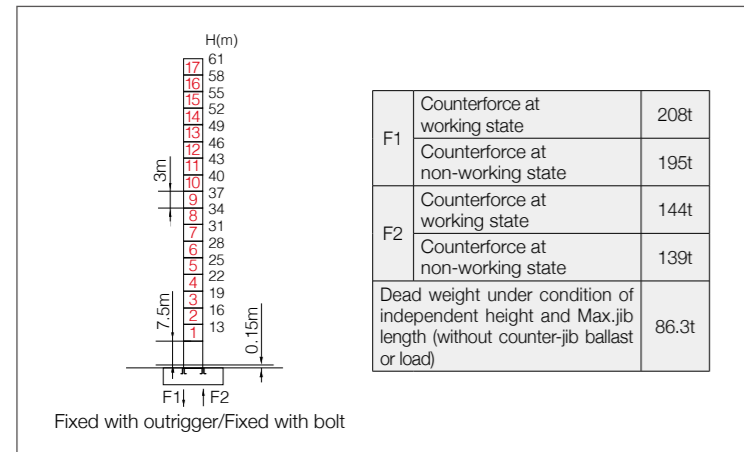
Jib Length & Tip Load



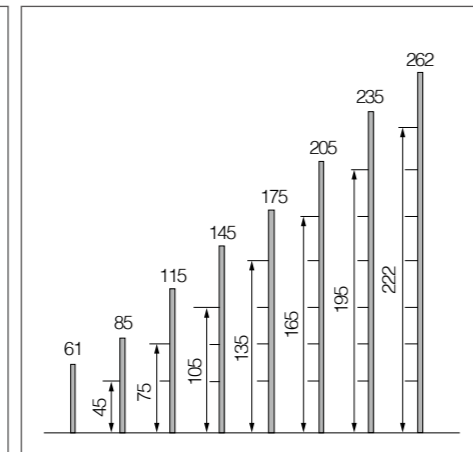
Counter-jib Ballast

| Jib length (m) | Counter-jib length (m) | Weight of counter-jib ballast (kg) | 4300kg Counter-jib ballast(block) | 2650kg Counter-jib ballast(block) | 1700kg Counter-jib ballast(block) |
|----------------|------------------------|------------------------------------|-----------------------------------|-----------------------------------|-----------------------------------|
| 75 | 21.3 | 25850 | 5 | 1 | 1 |
| 70 | 21.3 | 24150 | 5 | 1 | 0 |
| 65 | 21.3 | 23200 | 5 | 0 | 1 |
| 60 | 18.3 | 25850 | 5 | 1 | 1 |
| 55 | 18.3 | 24150 | 5 | 1 | 0 |
| 50 | 18.3 | 21500 | 5 | 0 | 0 |
| 45 | 18.3 | 19850 | 4 | 1 | 0 |
| 40 | 18.3 | 17200 | 4 | 0 | 0 |
| 35 | 18.3 | 14600 | 3 | 0 | 1 |
| 30 | 18.3 | 8600 | 2 | 0 | 0 |

Masts



Anchorage

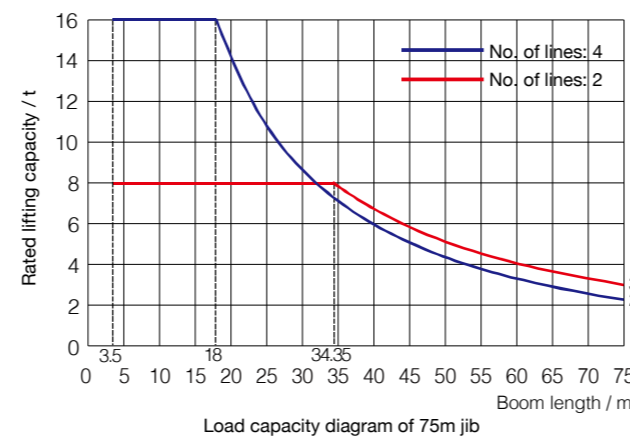


Load diagrams

| Range | Max. lifting capacity | 18 | 20 | 23 | 25 | 28 | 30 | 33 | 35 | 37 | 40 | 43 | 45 |
|-------|-----------------------|-------|-------|-------|-------|-------|-------|-------|-------|------|------|------|------|
| 75m | 3.5~34.35m/8t | | | | 8.00 | | | | 7.83 | 7.33 | 6.68 | 6.13 | 5.80 |
| | 3.5~18.00m/16t | 16.00 | 14.12 | 11.94 | 10.79 | 9.39 | 8.61 | 7.63 | 7.07 | 6.57 | 5.93 | 5.37 | 5.04 |
| | 3.5~36.65m/8t | | | | 8.00 | | | | 7.91 | 7.22 | 6.62 | 6.27 | |
| 70m | 3.5~19.17m/16t | 16.00 | 15.22 | 12.89 | 11.66 | 10.16 | 9.33 | 8.28 | 7.69 | 7.15 | 6.46 | 5.87 | 5.52 |
| | 3.5~38.99m/8t | | | | 8.00 | | | | 7.76 | 7.13 | 6.76 | | |
| | 3.5~20.36m/16t | 16.00 | 16.00 | 13.86 | 12.55 | 10.95 | 10.06 | 8.95 | 8.31 | 7.75 | 7.01 | 6.37 | 6.00 |
| | 3.5~40.55m/8t | | | | 8.00 | | | | 7.47 | 7.08 | | | |
| 60m | 3.5~21.16m/16t | 16.00 | 16.00 | 14.51 | 13.14 | 11.48 | 10.56 | 9.39 | 8.73 | 8.14 | 7.37 | 6.71 | 6.32 |
| | 3.5~41.95m/8t | | | | 8.00 | | | | 7.77 | 7.37 | | | |
| | 3.5~21.87m/16t | 16.00 | 16.00 | 15.09 | 13.67 | 11.95 | 11.00 | 9.79 | 9.10 | 8.50 | 7.70 | 7.02 | 6.61 |
| | 3.5~43.54m/8t | | | | 8.00 | | | | 7.70 | 7.37 | | | |
| 50m | 3.5~22.68m/16t | 16.00 | 16.00 | 15.74 | 14.28 | 12.48 | 11.49 | 10.24 | 9.53 | 8.90 | 8.07 | 7.36 | 6.94 |
| | 3.5~45.00m/8t | | | | 8.00 | | | | 7.47 | 7.08 | | | |
| | 3.5~23.89m/16t | 16.00 | 16.00 | 16.00 | 15.17 | 13.28 | 12.23 | 10.91 | 10.16 | 9.49 | 8.62 | 7.87 | 7.43 |
| | 3.5~40.00m/8t | | | | 8.00 | | | | 7.47 | 7.08 | | | |
| | 3.5~24.12m/16t | 16.00 | 16.00 | 16.00 | 15.35 | 13.44 | 12.38 | 11.05 | 10.29 | 9.61 | 8.73 | | |
| | 3.5~35.00m/8t | | | | 8.00 | | | | 7.47 | 7.08 | | | |
| 35m | 3.5~22.82m/16t | 16.00 | 16.00 | 16.00 | 14.37 | 12.57 | 11.58 | 10.32 | 9.60 | | | | |
| | 3.5~30.00m/8t | | | | 8.00 | | | | 7.47 | 7.08 | | | |
| 30m | 3.5~17.82m/16t | 15.81 | 13.95 | 11.80 | 10.66 | 9.27 | 8.50 | | | | | | |

| Range | Max. lifting capacity | 48 | 50 | 53 | 55 | 58 | 60 | 63 | 65 | 68 | 70 | 72 | 75 |
|-------|-----------------------|------|------|------|------|------|------|------|------|------|------|------|------|
| 75m | 3.5~34.35m/8t | 5.36 | 5.09 | 4.74 | 4.52 | 4.22 | 4.04 | 3.79 | 3.64 | 3.43 | 3.30 | 3.17 | 3.00 |
| | 3.5~18.00m/16t | 4.60 | 4.34 | 3.98 | 3.76 | 3.47 | 3.29 | 3.04 | 2.89 | 2.67 | 2.54 | 2.42 | 2.24 |
| 70m | 3.5~36.65m/8t | 5.80 | 5.52 | 5.14 | 4.91 | 4.59 | 4.40 | 4.13 | 3.97 | 3.74 | 3.60 | | |
| | 3.5~19.17m/16t | 5.05 | 4.76 | 4.38 | 4.15 | 3.83 | 3.64 | 3.38 | 3.21 | 2.98 | 2.84 | | |
| 65m | 3.5~38.99m/8t | 6.25 | 5.95 | 5.55 | 5.30 | 4.96 | 4.76 | 4.47 | 4.30 | | | | |
| | 3.5~20.36m/16t | 5.50 | 5.20 | 4.79 | 4.54 | 4.21 | 4.00 | 3.72 | 3.54 | | | | |
| 60m | 3.5~40.55m/8t | 6.56 | 6.25 | 5.82 | 5.57 | 5.21 | 5.00 | | | | | | |
| | 3.5~21.16m/16t | 5.80 | 5.49 | 5.07 | 4.81 | 4.46 | 4.24 | | | | | | |
| 55m | 3.5~41.95m/8t | 6.83 | 6.50 | 6.07 | 5.80 | | | | | | | | |
| | 3.5~21.87m/16t | 6.07 | 5.75 | 5.31 | 5.04 | | | | | | | | |
| 50m | 3.5~43.54m/8t | 7.14 | 6.80 | | | | | | | | | | |
| | 3.5~22.68m/16t | 6.38 | 6.04 | | | | | | | | | | |

Load Capacity Diagram



Transmission Mechanism

| | Model | Power | Speed |
|---------------|-------------------------------|-----------------|---------------|
| Slewing | SHJ120A7.5TP SHJ120A7.5TPF | 2x7.5kW | 0 ~ 0.75r/min |
| Luffing | SXJ11.75P | 11kW | 0 ~ 100m/min |
| Lifting | 65QP40 | 65kW | 0 ~ 80m/min |
| Power voltage | 380V(±10%) | Power frequency | 50Hz |

Note: if working rope capacity is greater than 630m, please contact manufacturer.

Packing List

| No. | Name | Shape | L(m) | B(m) | H(m) | Weight of single piece (t) | Qty. |
|-----|------------------------|-------|-------|------|------|----------------------------|------|
| 1 | Jib systemI | | 10.22 | 1.96 | 1.73 | 2.55 | 1 |
| 2 | Jib systemII | | 10.21 | 1.70 | 1.67 | 1.77 | 1 |
| 3 | Jib systemIII | | 10.21 | 1.70 | 1.62 | 1.44 | 1 |
| 4 | Jib systemIV | | 10.21 | 1.70 | 1.62 | 1.42 | 1 |
| 5 | Jib systemV | | 5.21 | 1.70 | 1.62 | 0.72 | 1 |
| 6 | Jib systemVI | | 10.21 | 1.70 | 1.65 | 1.42 | 1 |
| 7 | Jib systemVII | | 10.21 | 1.70 | 1.60 | 1.20 | 1 |
| 8 | Jib systemVIII | | 5.21 | 1.70 | 1.60 | 0.53 | 1 |
| 9 | Jib systemIX | | 5.21 | 1.70 | 1.60 | 0.52 | 1 |
| 10 | Jib systemX | | 0.97 | 1.88 | 1.80 | 0.17 | 1 |
| 11 | Tower cap | | 8.78 | 1.87 | 2.57 | 2.90 | 1 |
| 12 | Slewing mast | | 2.27 | 1.96 | 3.04 | 2.67 | 1 |
| 13 | Hook | | 1.65 | 0.27 | 1.83 | 0.54 | 1 |
| 14 | Climbing frame | | 7.67 | 2.79 | 2.62 | 5.07 | 1 |
| 15 | Slewing assembly | | 2.62 | 2.62 | 2.52 | 5.81 | 1 |
| 16 | Luffing dolly | | 3.28 | 1.91 | 1.00 | 0.79 | 1 |
| 17 | Counter-jib sectionI | | 7.48 | 1.80 | 0.86 | 1.83 | 1 |
| 18 | Counter-jib sectionII | | 3.24 | 1.80 | 0.86 | 0.88 | 1 |
| 19 | Counter-jib sectionIII | | 10.13 | 1.80 | 0.86 | 2.40 | 1 |
| 20 | Cab | | 1.85 | 1.20 | 2.20 | 0.40 | 1 |
| 21 | Basic section | | 7.81 | 2.10 | 2.11 | 5.39 | 1 |
| 22 | Strengthen section | | 3.53 | 2.21 | 0.70 | 1.95 | 2 |
| 23 | Standard section | | 3.53 | 2.21 | 0.70 | 1.78 | 15 |
| 24 | Lifting mechanism | | 3.24 | 2.25 | 1.65 | 3.20 | 1 |